



BENETEAU

2016 - 2017 | Boat Definitions

GRAN TURISMO 40

TRIM ESSENTIAL

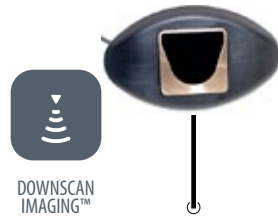
HELM

NSS Evo2 12" wide

- 12" LED Multifunction Color/Touch display (adjusted to the size)
- Navionics regional cartography included (on SDcard)
- Integrated Pilot control (optional)



Bronze HDI Transducer 50/200/455/800 DownScan Imaging



DOWNSCAN IMAGING™



ELECTRONIC PACK

NAIS400 AIS Transponder



WIFI-1™: Wireless Module

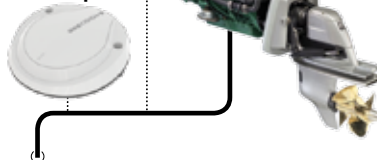
- Free "GoFree" application to view/control the MFD available from web



Ethernet

Auto Pilot System

SG05 Interface Precision-9 Compass



RS90 Black Box/Handset



OPTIONAL

RADAR

Broadband Radar 4G



Ethernet

OPTIONAL

STRUCTURESCAN

StructureScan Transducer (Module in HDST)



STRUCTURESCAN®



OPTIONS

GRAN TURISMO 46

TRIM ESSENTIAL

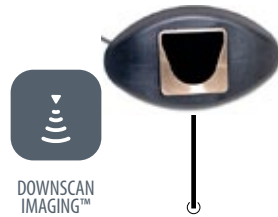
HELM

NSS Evo2 12" wide

- 12" LED Multifunction Color/Touch display (adjusted to the size)
- Navionics regional cartography included (on SDcard)
- Integrated Pilot control (optional)



Bronze HDI Transducer 50/200/455/800 DownScan Imaging



DOWNSCAN IMAGING™



ELECTRONIC PACK

NSS Evo2 16" wide

- 16-inch display with GPS, CHIRP echosounder, StructureScan® HD, HDMI out
- In place of NSS 12" from Trim US option



NAIS400 AIS Transponder



WIFI-1™: Wireless Module

- Free "GoFree" application to view/control the MFD available from web



Ethernet

Auto Pilot System

(Volvo Z Drive)

SG05 Interface

Precision-9 Compass



RS90 Black Box/ Handset



OPTIONAL

RADAR

Broadband Radar 4G

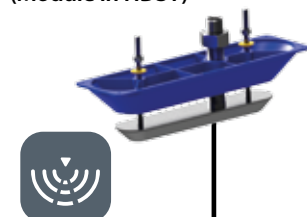


Ethernet

OPTIONAL

STRUCTURESCAN

StructureScan Transducer (Module in HDST)



STRUCTURESCAN®



GRAN TURISMO 49 Hard Top

TRIM ESSENTIAL (US TRIM LEVEL)

HELM

NSS Evo2 12" wide

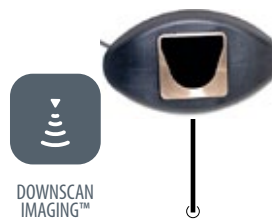
- 12" LED Multifunction Color/Touch display (adjusted to the size)
- Navionics regional cartography included (on SDcard)
- Integrated Pilot control (optional)



RS90 Black Box/Handset



Bronze HDI Transducer 50/200/455/800 DownScan Imaging



NAIS400 AIS Transponder



WIFI-1™: Wireless Module

- Free "GoFree" application to view/control the MFD available from web



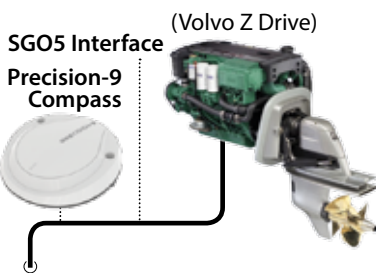
Ethernet

Broadband Radar 4G



Ethernet

Auto Pilot System



(Volvo Z Drive)



OPTIONAL

SECOND NSS AT HELM

NSS Evo2 12" wide

- 12" LED Multifunction Color/Touch display (adjusted to the size)
- Navionics regional cartography included (on SDcard)
- Integrated Pilot control (optional)



OPTIONS



GRAN TURISMO 49 Fly

TRIM ESSENTIAL (US TRIM LEVEL)

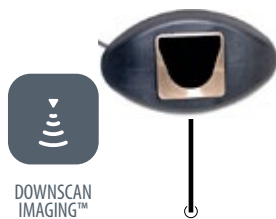
HELM

NSS Evo2 12" wide

- 12" LED Multifunction Color/Touch display (adjusted to the size)
- Navionics regional cartography included (on SDcard)
- Integrated Pilot control (optional)



Bronze HDI Transducer 50/200/455/800 DownScan Imaging



RS90 Black Box/Handset



FLY

NSS Evo2 12" wide

- 12" LED Multifunction Color/Touch display (adjusted to the size)
- Navionics regional cartography included (on SDcard)
- Integrated Pilot control (optional)



HS35 Wireless Handset



NAIS400 AIS Transponder



WIFI-1™: Wireless Module

- Free "GoFree" application to view/control the MFD available from web

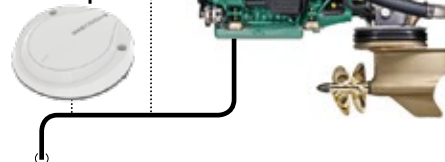


Broadband Radar 4G



Auto Pilot System

SGO5 Interface (Volvo IPS Drive) Precision-9 Compass



OPTIONAL

SECOND NSS AT HELM

NSS Evo2 12" wide

- 12" LED Multifunction Color/Touch display (adjusted to the size)
- Navionics regional cartography included (on SDcard)
- Integrated Pilot control (optional)



OPTIONS



MC4 S

TRIM ESSENTIAL (US STANDARD)

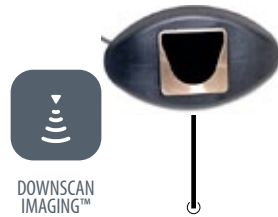
HELM

NSS Evo2 12" wide

- 12" LED Multifunction Color/Touch display (adjusted to the size)
- Navionics regional cartography included (on SDcard)
- Integrated Pilot control (optional)



Bronze HDI Transducer 50/200/455/800 DownScan Imaging



DOWNSCAN IMAGING™



ELECTRONIC PACK

NAIS400 AIS Transponder



WiFi-1™: Wireless Module

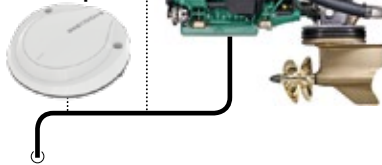
- Free "GoFree" application to view/control the MFD available from web



Ethernet

Auto Pilot System

SGO5 Interface (Volvo IPS Drive) Precision-9 Compass



RS90 Black Box/ Handset



Broadband Radar 4G



Ethernet



OPTIONAL

SECOND NSS AT HELM

NSS Evo2 12" wide

- 12" LED Multifunction Color/Touch display (adjusted to the size)
- Navionics regional cartography included (on SDcard)
- Integrated Pilot control (optional)



OPTIONAL

THERMAL CAMERA PACK

Thermal Camera (M324XP)



RCA

Video Splitter



RCA

OPTIONAL

CAMERA

Navcams & Video Splitter



RCA

OPTIONS



MC4 Fly

TRIM ESSENTIAL (US STANDARD)

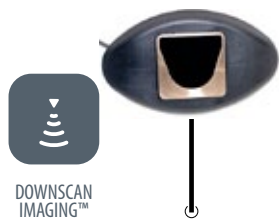
HELM

NSS Evo2 12" wide

- 12" LED Multifunction Color/Touch display (adjusted to the size)
- Navionics regional cartography included (on SDcard)
- Integrated Pilot control (optional)



Bronze HDI Transducer 50/200/455/800 DownScan Imaging



FLY

NSS Evo2 12" wide

- 12" LED Multifunction Color/Touch display (adjusted to the size)
- Navionics regional cartography included (on SDcard)
- Integrated Pilot control (optional)



ELECTRONIC PACK

NAIS400 AIS Transponder



WiFi-1™: Wireless Module

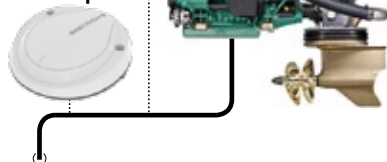
- Free "GoFree" application to view/control the MFD available from web



Ethernet

Auto Pilot System

SGO5 Interface (Volvo IPS Drive) Precision-9 Compass



HELM

RS90 Black Box/Handset and HS35 Handset



FLY

FLY

Broadband Radar 4G



Ethernet



OPTIONAL

SECOND NSS AT HELM

NSS Evo2 12" wide

- 12" LED Multifunction Color/Touch display (adjusted to the size)
- Navionics regional cartography included (on SDcard)
- Integrated Pilot control (optional)



OPTIONAL

THERMAL CAMERA PACK

Thermal Camera (M324XP)



RCA

Video Splitter



RCA

OPTIONAL

CAMERA

Navcams & Video Splitter



RCA

OPTIONS



MC5 S

TRIM ESSENTIAL (US STANDARD)

HELM

NSS Evo2 12" wide

- 12" LED Multifunction Color/Touch display (adjusted to the size)
- Navionics regional cartography included (on SDcard)
- Integrated Pilot control (optional)



NSS Evo2 12" wide

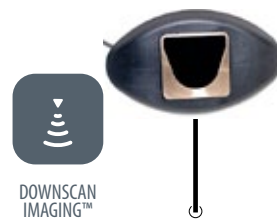
- 12" LED Multifunction Color/Touch display (adjusted to the size)
- Navionics regional cartography included (on SDcard)
- Integrated Pilot control (optional)



RS90 Black Box/Handset



Bronze HDI Transducer 50/200/455/800 DownScan Imaging



NAIS400 AIS Transponder



WIFI-1™: Wireless Module

- Free "GoFree" application to view/control the MFD available from web

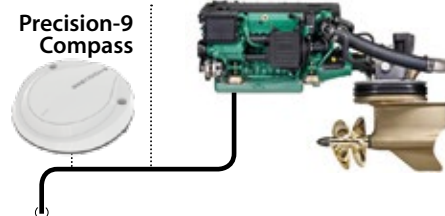


Broadband Radar 4G



Auto Pilot System

SGO5 Interface (Volvo IPS Drive) Precision-9 Compass



OPTIONAL UPGRADE HELM

IN PLACE OF NSS 12" AT HELM

MO16-T

- Widescreen 15.6", 1000nits multi-touch monitor



MO16-T

- Widescreen 15.6", 1000nits multi-touch monitor



NSO Evo2 black box



OP50 Remote



OPTIONAL THERMAL CAMERA PACK

Thermal Camera (M324XP) Video Splitter

Thermal Camera (M324XP)



Video Splitter



OPTIONAL CAMERA

Navcams & Video Splitter

Navcams & Video Splitter



OPTIONS

MC5 Fly

TRIM ESSENTIAL (US STANDARD)

HELM

NSS Evo2 12" wide

- 12" LED Multifunction Color/ Touch display (adjusted to the size)
- Navionics regional cartography included (on SDCard)
- Integrated Pilot control (optional)



NSS Evo2 12" wide

- 12" LED Multifunction Color/ Touch display (adjusted to the size)
- Navionics regional cartography included (on SDCard)
- Integrated Pilot control (optional)



Bronze HDI Transducer 50/200/455/800 DownScan Imaging



RS90 Black Box/ Handset



FLY

NSS Evo2 12" wide

- 12" LED Multifunction Color/ Touch display (adjusted to the size)
- Navionics regional cartography included (on SDCard)
- Integrated Pilot control (optional)



HS35 Wireless Handset



NAIS400 AIS Transponder



WIFI-1™: Wireless Module

- Free "GoFree" application to view/control the MFD available from web



Broadband Radar 4G



Auto Pilot System

SGO5 Interface Precision-9 Compass



(Volvo IPS Drive)



OPTIONAL UPGRADE HELM

IN PLACE OF NSS 12" AT HELM

MO16-T

- Widescreen 15.6", 1000nits multi-touch monitor



MO16-T

- Widescreen 15.6", 1000nits multi-touch monitor



NSO Evo2 black box



OP50 Remote



OPTIONAL THERMAL CAMERA PACK

Thermal Camera (M324XP)



Video Splitter



RCA

RCA

OPTIONAL CAMERA

Navcams & Video Splitter



RCA



OPTIONS

MC6 S

TRIM ESSENTIAL (US STANDARD)

HELM

MO16-T

- Widescreen 15.6", 1000nits multi-touch monitor



MO16-T

- Widescreen 15.6", 1000nits multi-touch monitor



NSO Evo2 black box



IN ARMCHAIR

OP50 Remote



HELM

RS90 Black Box/ Handset



Bronze HDI Transducer 50/200/455/800 DownScan Imaging



NAIS400 AIS Transponder



WIFI-1™: Wireless Module

- Free "GoFree" application to view/control the MFD available from web



Broadband Radar 4G

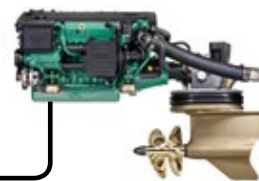


Auto Pilot System

SGO5 Interface Precision-9 Compass



(Volvo IPS Drive)



Navcams & Video Splitter



OPTIONAL UPGRADE HELM

MO24-T Monitor

- Widescreen 24", 1000nits touchscreen monitor



OPTIONAL THERMAL CAMERA PACK

Thermal Camera (M324XP)

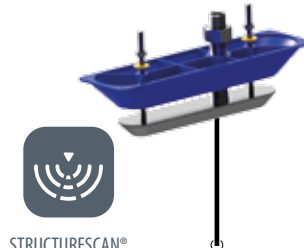


Video Splitter



OPTIONAL STRUCTURESCAN

StructureScan Transducer (Module in HDST)



OPTIONS

MC6 Fly

TRIM ESSENTIAL (US STANDARD)

HELM

IN ARMCHAIR

HELM

FLY

Double MO16-T

- Widescreen 15.6", 1000nits multi-touch monitor



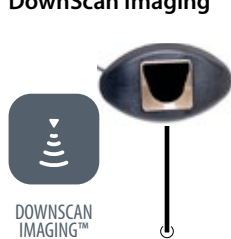
NSO Evo2 black box



OP50 Remote



Bronze HDI Transducer 50/200/455/800 DownScan Imaging



RS90 Black Box/ Handset



MO16-T

- Widescreen 15.6", 1000nits multi-touch monitor



HS35 Wireless Handset



NAIS400 AIS Transponder



WIFI-1™: Wireless Module

- Free "GoFree" application to view/control the MFD available from web



Broadband Radar 4G



Auto Pilot System

SGO5 Interface Precision-9 Compass



(Volvo IPS Drive)



Navcams & Video Splitter



OPTIONAL UPGRADE HELM

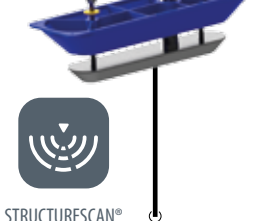
MO24-T Monitor

- Widescreen 24", 1000nits touchscreen monitor



OPTIONAL STRUCTURESCAN

StructureScan Transducer (Module in HDST)



OPTIONAL FLY

NSS Evo2 12" wide

- 12" LED Multifunction Color/Touch display (adjusted to the size)
- Navionics regional cartography included (on SDCard)
- Integrated Pilot control (optional)



OPTIONAL THERMAL CAMERA PACK

Thermal Camera (M324XP)



Video Splitter



OPTIONS