

FY5MA CARBON MAST	
Characteristics	
Overall Length :	15.99 m
Waterline Length :	15.647 m
Beam max :	4.999 m
Waterline Beam :	4.115 m
Draft GTE / TGTE:	2.516 / 3.033 m
ISO Light Craft Displacement - Mlc (1):	16457 kg
Maximum Load Displacement - Mldc (1):	21232 kg
Keel weight (fin+bulb) GTE / TGTE:	4500 kg
IG	22.900 m
ISP	24.750 m
J	6.400 m
P	23.000 m
E	6.800 m
Main Sail Area	90 mq
Jib Area	67 mq
Genoa Area	78 mq
Staysail Area	35 mq
Gennaker Area	273 mq
Code Zero Area	162 mq
BAD	1.550 m
BAS	1.750 m
Rake	1°
Chainplate Angle	20.30°
Half width at the chainplate	2.254 m

GTE STABILITY (1)	
Draft ISO Mldc	2.516 m
RM 1° Mldc	580 kg x m
RM 30° Mldc	14100 kg x m
RM max Mldc	16479 kg x m

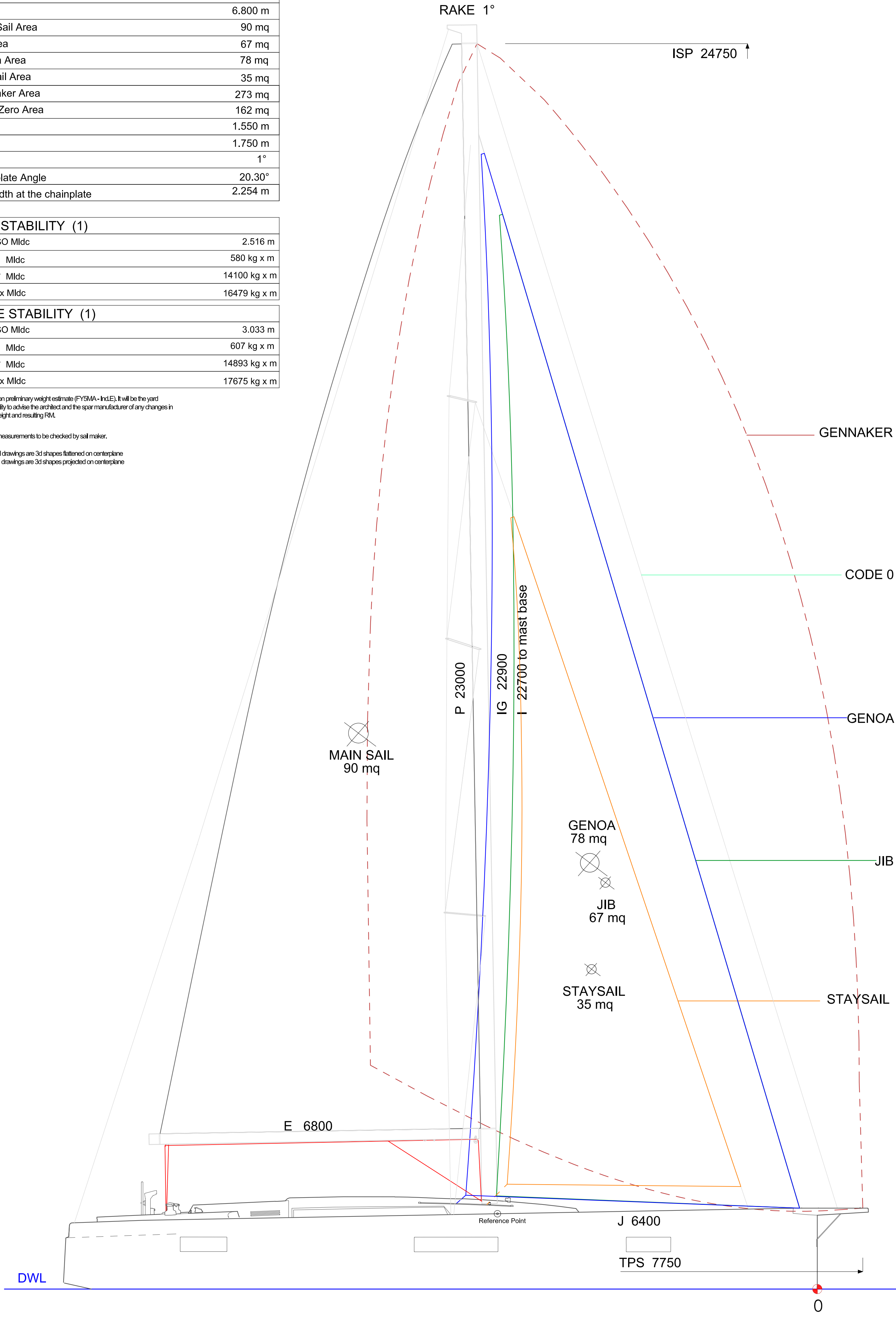
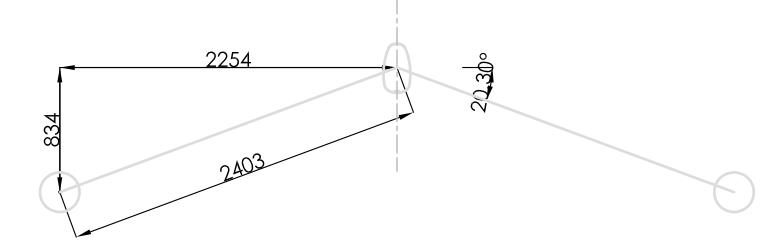
TGTE STABILITY (1)	
Draft ISO Mldc	3.033 m
RM 1° Mldc	607 kg x m
RM 30° Mldc	14893 kg x m
RM max Mldc	17675 kg x m

(1) Based on preliminary weight estimate (FY5MA - Inc.E). It will be the yard responsibility to advise the architect and the spar manufacturer of any changes in the boat weight and resulting RM.

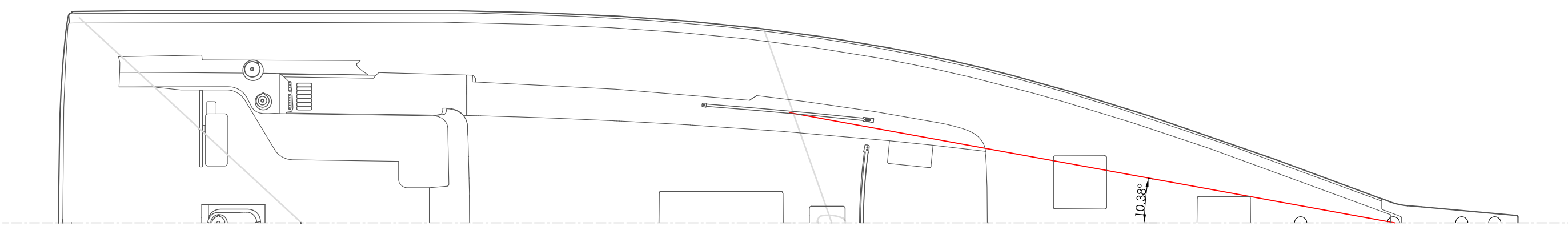
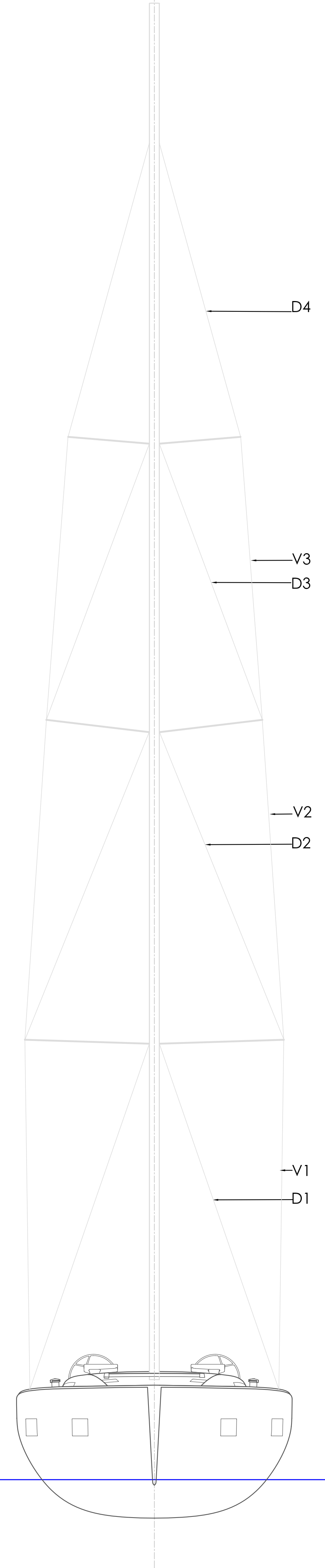
(2) All sail measurements to be checked by sail maker.

(3) mainsail drawings are 3d shapes flattened on centerplane
headsail drawings are 3d shapes projected on centerplane

SECTION NORMAL TO THE MAST



MAST HEIGHT (from DWL) = 26818



BISCONTINI YACHT DESIGN		
WWW.BISCONTINIDESIGN.COM - VIA ZENALE 7 - 20123 MILANO - ITALY		
PROJECT	FY5MA - FIRST YACHT 53'	
FOR	BENETEAU	
DRAWING TITLE	SAIL PLAN FY5MA - CARBON MAST	
DATE	21/11/2018	SCALE A1 1:50
DESIGN number	081	
DRAWN BY	FR	CHECKED BY RB
REV.	F	