



BENETEAU

2017 - 2018 | Boat Definitions

GRAN TURISMO 40

TRIM ESSENTIAL

HELM

NSS Evo3 12" wide

- 12" LED Multifunction Color/Touch display (adjusted to the size)
- Navionics regional cartography included (on SDcard)
- Integrated Pilot control (optional)



Bronze HDI Transducer
50/200/455/800
DownScan Imaging

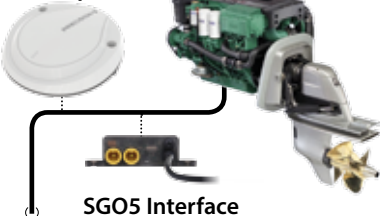


ELECTRONIC PACK

NAIS500 AIS Transponder



Auto Pilot System Precision-9 Compass (Volvo Z Drive)



RS90 Black Box/Handset



SG05 Interface



US ELECTRONIC PACK

RADAR

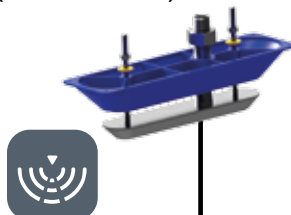
Broadband Radar 4G



Ethernet

OPTIONAL STRUCTURESCAN

StructureScan Transducer (Module in HDST)



STRUCTURESCAN®



OPTIONS

GRAN TURISMO 46

TRIM ESSENTIAL

HELM

NSS Evo3 12" wide

- 12" LED Multifunction Color/Touch display (adjusted to the size)
- Navionics regional cartography included (on SDcard)
- Integrated Pilot control (optional)



Bronze HDI Transducer 50/200/455/800 DownScan Imaging



ELECTRONIC PACK

NSS Evo3 16" wide

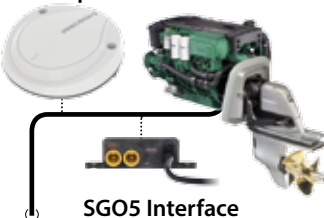
- 16-inch display with GPS, CHIRP, HDMI out, echosounder, StructureScan® HD
- In place of NSS 12" from Trim US option



NAIS500 AIS Transponder



Auto Pilot System Precision-9 Compass (Volvo Z Drive)



SGO5 Interface

RS90 Black Box/ Handset



Broadband Radar 4G



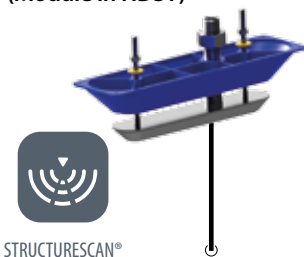
Ethernet



OPTIONAL

STRUCTURESCAN

StructureScan Transducer (Module in HDST)



STRUCTURESCAN®

OPTIONS



GRAN TURISMO 50 Hard Top

TRIM ESSENTIAL (US TRIM LEVEL)

HELM

NSS Evo3 16" wide

- 16-inch display with GPS, CHIRP, HDMI out, echosounder, StructureScan® HD
- In place of NSS 12" from Trim US option



Bronze HDI Transducer 50/200/455/800 DownScan Imaging



Broadband Radar 4G



NAIS500 AIS Transponder



Auto Pilot System

Precision-9 Compass



(Volvo Z Drive)



SGO5 Interface



RS90 Black Box/Handset



OPTIONAL UPGRADE HELM

IN PLACE OF NSS 16" AT HELM

MO19-T

- Widescreen 19", 1000nits multi-touch monitor



OP50 Remote



WIFI-1: Wireless Module



OPTIONS

GRAN TURISMO 50 Fly

TRIM ESSENTIAL (US TRIM LEVEL)

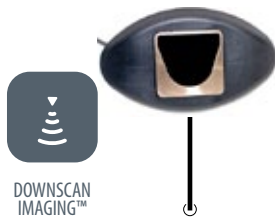
HELM

NSS Evo3 16" wide

- 16-inch display with GPS, CHIRP, HDMI out, echosounder, StructureScan® HD
- In place of NSS 12" from Trim US option



Bronze HDI Transducer 50/200/455/800 DownScan Imaging



Broadband Radar 4G



Ethernet

NAIS500 AIS Transponder

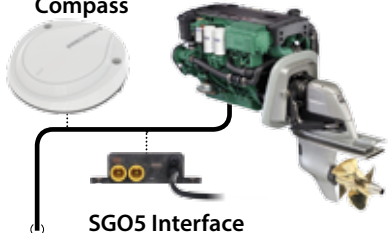


FLY

Auto Pilot System

Precision-9 Compass

(Volvo Z Drive)



SGO5 Interface

RS90 Black Box/Handset



- #### NSS Evo3 12" wide
- 12" LED Multifunction Color/Touch display (adjusted to the size)
 - Navionics regional cartography included (on SDCard)
 - Integrated Pilot control (optional)



H535 Wireless Handset



OPTIONAL UPGRADE HELM

IN PLACE OF NSS 16" AT HELM

MO19-T

- Widescreen 19", 1000nits multi-touch monitor



OP50 Remote



WIFI-1: Wireless Module



Ethernet



OPTIONS

MC5 S

TRIM ESSENTIAL (US STANDARD)

HELM

NSS Evo3 12" wide

- 12" LED Multifunction Color/Touch display (adjusted to the size)
- Navionics regional cartography included (on SDcard)
- Integrated Pilot control (optional)



WIRELESS BUILT-IN



NSS Evo3 12" wide

- 12" LED Multifunction Color/Touch display (adjusted to the size)
- Navionics regional cartography included (on SDcard)
- Integrated Pilot control (optional)



RS90 Black Box/Handset



Bronze HDI Transducer 50/200/455/800 DownScan Imaging



DOWNSCAN IMAGING™



NAIS500 AIS Transponder

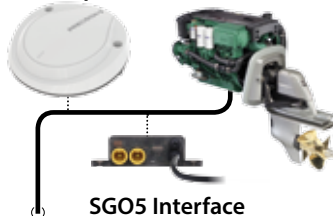


Broadband Radar 4G



Ethernet

Auto Pilot System Precision-9 Compass (Volvo Z Drive)



SG05 Interface



OPTIONAL UPGRADE HELM

IN PLACE OF NSS 12" AT HELM

MO16-T

- Widescreen 15.6", 1000nits multi-touch monitor



MO16-T

- Widescreen 15.6", 1000nits multi-touch monitor



OP50 Remote



WIFI-1: Wireless Module



Ethernet

OPTIONAL THERMAL CAMERA

Thermal Camera (M324XP)



RCA

OPTIONAL CAMERA

Navcam (rear)



RCA

OPTIONS



MC5 Fly

TRIM ESSENTIAL (US TRIM LEVEL)

HELM

NSS Evo3 12" wide

- 12" LED Multifunction Color/Touch display (adjusted to the size)
- Navionics regional cartography included (on SDcard)
- Integrated Pilot control (optional)



NSS Evo3 12" wide

- 12" LED Multifunction Color/Touch display (adjusted to the size)
- Navionics regional cartography included (on SDcard)
- Integrated Pilot control (optional)



Bronze HDI Transducer 50/200/455/800 DownScan Imaging



Broadband Radar 4G

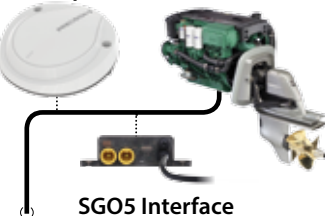


FLY

NAIS500 AIS Transponder



Auto Pilot System Precision-9 Compass (Volvo Z Drive)



RS90 Black Box/Handset



- #### NSS Evo3 12" wide
- 12" LED Multifunction Color/Touch display (adjusted to the size)
 - Navionics regional cartography included (on SDcard)
 - Integrated Pilot control (optional)



HS35 Wireless Handset



OPTIONAL UPGRADE HELM IN PLACE OF NSS 12" AT HELM

MO16-T

- Widescreen 15.6", 1000nits multi-touch monitor



MO16-T

- Widescreen 15.6", 1000nits multi-touch monitor



OP50 Remote



OPTIONAL CAMERA

Thermal Camera (M324XP)



OPTIONAL CAMERA

Navcam (rear)



OPTIONAL FLY

NSS Evo3 9" wide

- 9" LED Multifunction Colour/Touch display
- Navionics regional cartography included (on SDcard)
- Integrated Pilot control (optional)



MC6 S

TRIM ESSENTIAL (US STANDARD)

HELM

MO16-T

- Widescreen 15.6", 1000nits multi-touch monitor



MO16-T

- Widescreen 15.6", 1000nits multi-touch monitor



WIFI-1: Wireless Module



Ethernet

OP50 Remote



Bronze HDI Transducer 50/200/455/800 DownScan Imaging



Broadband Radar 4G



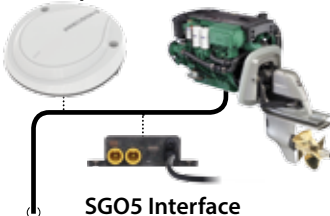
Ethernet



NAIS500 AIS Transponder



Auto Pilot System Precision-9 Compass (Volvo Z Drive)



SGO5 Interface

RS90 Black Box/Handset



Navcam (rear)



RCA



OPTIONAL UPGRADE HELM IN PLACE OF NSO AT HELM

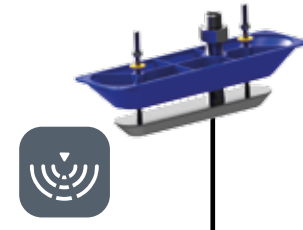
MO24-T Monitor

- Widescreen 24", 1000nits touchscreen monitor



OPTIONAL STRUCTURESCAN

StructureScan Transducer (Module in HDST)



STRUCTURESCAN®

OPTIONAL THERMAL CAMERA

Thermal Camera (M324XP)



RCA

OPTIONS



MC6 Fly

TRIM ESSENTIAL (US STANDARD)

HELM

MO16-T

- Widescreen 15.6", 1000nits multi-touch monitor



MO16-T

- Widescreen 15.6", 1000nits multi-touch monitor



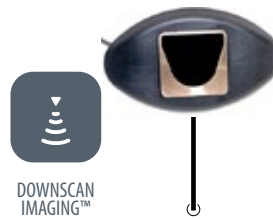
WIFI-1: Wireless Module



OP50 Remote



Bronze HDI Transducer 50/200/455/800 DownScan Imaging



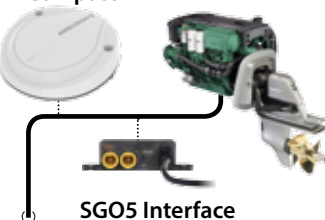
Broadband Radar 4G



NAIS500 AIS Transponder



Auto Pilot System Precision-9 Compass (Volvo Z Drive)



RS90 Black Box/ Handset



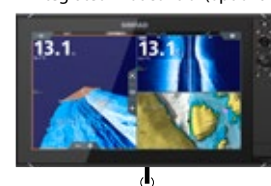
Navcam (rear)



FLY

NSS Evo3 16" wide

- 16" LED Multifunction Color/Touch display (adjusted to the size)
- Navionics regional cartography included (on SDCard)
- Integrated Pilot control (optional)



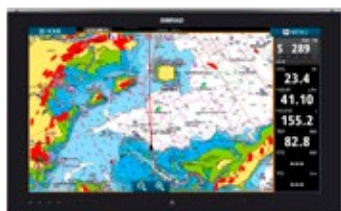
HS35 Wireless Handset



OPTIONAL UPGRADE HELM IN PLACE OF NSO AT HELM

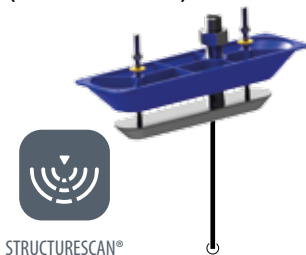
MO24-T Monitor

- Widescreen 24", 1000nits touchscreen monitor



OPTIONAL STRUCTURESCAN

StructureScan Transducer (Module in HDST)



OPTIONAL CAMERA

Thermal Camera (M324XP)



OPTIONAL FLY

NSS Evo3 12" wide

- 12" LED Multifunction Colour/Touch display
- Navionics regional cartography included (on SDCard)
- Integrated Pilot control (optional)



OPTIONS