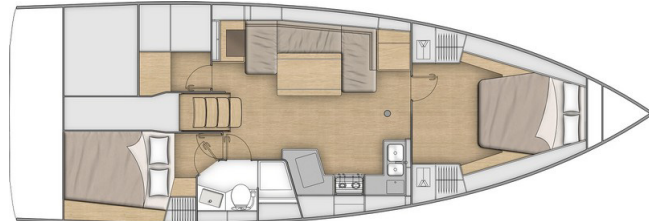
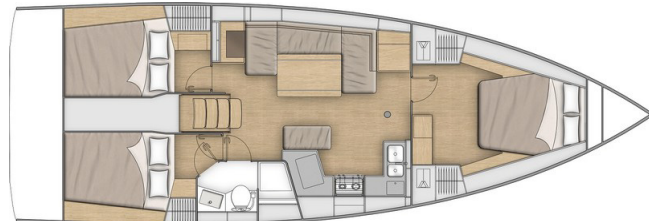




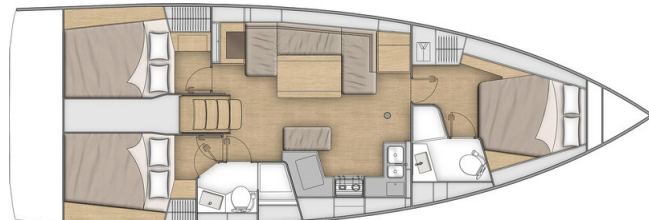
2 cabins 1 head version



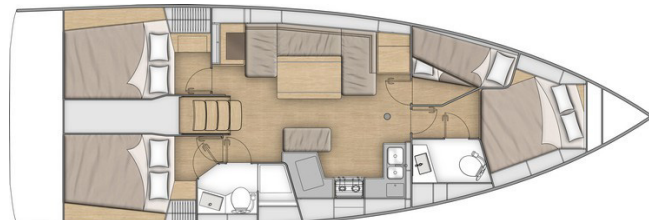
3 cabins 1 head version (+ Sink unit)



3 cabins 2 heads version



4 cabins 2 heads version



GENERAL SPECIFICATIONS

• L.O.A	12,87m	42'3"
• Hull length	11,99m	39'4"
• L.W.L.	11,70m	38'5"
• Beam	4,18m	13'9"
• Deep draft (Cast iron)	2,17m	7'1"
• Deep ballast weight	2 007kg	4,423 lbs
• Shallow draft (Cast iron)	1,68m	5'6"
• Shallow ballast weight	2 237kg	4,930 lbs
• Performance draught (Cast iron)	2,27m	7'5"
• Performance keel weight	2 004kg	4,417 lbs
• Air draft (with aerial)	18,33m	60'2"
• Performance air draught (with aerial)	18,78m	61'7"
• Light displacement	7 985kg	17,600 lbs
• Fuel capacity (standard)	195L	52 US Gal
• Fresh water capacity (standard)	235L	62 US Gal
• Fresh water capacity (option)	330L	87 US Gal
• Engine power (standard)	45 HP	45 HP

ARCHITECTS / DESIGNERS

- Naval Architect: Marc Lombard
- Outside & interior design: Nauta Design

EC CERTIFICATION

- Category A - 10 people
- Category B - 10 people
- Category C - 12 people

STANDARD SAILS DIMENSIONS

• Furling mainsail (standard)	34,70m ²	373 sq ft
• Self-tacking jib (standard)	26,90m ²	290 sq ft
• Classic mainsail	41,80m ²	450 sq ft
• Furling genoa (105 %)	34,40m ²	370 sq ft
• Code 0	61,10m ²	658 sq ft
• I	15,13m	49'8"
• J	4,77m	15'8"
• P - Roller furling mast	14,69m	48'2"
• P - Classical mast	14,83m	48'8"
• E	5,08m	16'8"

PERFORMANCE (Extended classic mast + 0,45m / 1'6")

• Classic mainsail	43,20m ²	465 sq ft
• Genoa	36,50m ²	392 sq ft
• I	15,65m	51'4"
• J	4,78m	15'8"
• P	15,40m	50'6"
• E	5,00m	16'5"



STANDARD EQUIPMENT

CONSTRUCTION

- Design in accordance with European Directive requirements and according to CE certification
- Monolithic polyester contact hull
- Monolithic structural inner moulding bonded to the hull (Fabrics - resin)
- Injected deck construction in glass fiber and Saerfoam foam sandwich, covered with non-slip diamond pattern
- Cast iron keel fixed with bolts and stainless steel backing plates
- Twin rudders hung with stainless steel stock
- White coloured hull - Grey metal hull graphics
- 6 Hull portholes

DECK EQUIPMENT

RIGGING

- Anodised aluminum mast, deck stepped with in-mast furling system, 2 Aft swept spreaders
- Anodised aluminum boom
- Classic stainless steel single strand standard rigging
- Split backstay
- Rigid boom vang with tackle
- Self-tacking jib rigging with on-deck furler
- Mainsail stay rope on the roof (with 2 chainplates)
- 1 Self-tacking jib track with traveller
- Complete running rigging: Mainsail halyard, Genoa halyard with cleat on mast, Boom topping lift with cleat on mast, Mainsheet, 1 Self-tacking jib sheet
- 9 Clutches
- 2 flag halyards

WINCHES

- 2 Self tailing coachroof winches (H40.2 STA) on the coachroof
- 1 Aluminum Speed Grip winch handle
- 1 Winch handle box

SAILS

- Furling mainsail Dacron, with UV protection Natural, horizontal cut
- Self-tacking jib Dacron with UV protection Natural, horizontal cut

MOORING LINES - MOORING

- Self-draining chain locker - Integrated clench on the deck - Hatch cover
- Single roller stainless steel bow fitting with offset roller
- 6 Aluminum mooring cleats (Length: 300mm / 12")
- Stainless steel chafing plate

SAFETY ON DECK

- 2 stainless steel pulpit(s)
- 2 Stainless steel pushpits
- 2 Stainless steel handrails on coachroof
- 1 Lifebuoy support bracket
- Tube welded onto pulpit for flag
- Double guard lines and stainless steel stanchions (605mm / 2')
- Emergency ladder on pushpit

COCKPIT

- Self-draining cockpit
- 1 Sail locker/Workshop below starboard cockpit bench
- 1 Wet locker below starboard cockpit bench
- 1 2-section cockpit bottom locker: 1 hull bottom access and 1 gas bottle
- Teak slats on cockpit benches
- Foldaway helmsman foot chock
- 2 Steering wheel consoles: Stainless steel steering wheels (900 mm / 2'11" diameter) - Anthracite leather covering - Steering gear at the helm station - Steering line transmission system - Stainless steel handrail
- 2 Deck access for emergency tiller, below footrest
- 1 Tiller
- 1 Steering compass on the cockpit table
- Engine control, to starboard
- Enginer control panel, to port
- Cockpit table, stainless steel frame, 2 teak leaves, 4 cup holders, 2 stainless steel handrails, Stowage and location for BIB
- 1 2-part PMMA Saloon-type companionway door, Sliding hatch made of PMMA

SWIM PLATFORM / AFT TRANSOM

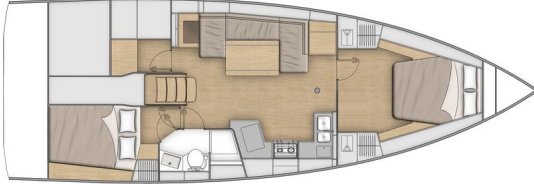
- Fully opening transom, convertible to bathing platform (2,65 x 0,80m / 8'8" x 2'7")
- Intermediate cockpit access step
- Manual opening with hoist
- Teak decking on swim deck
- 1 Fixed, telescopic stainless steel swimming ladder



INTERIOR

- Alpi walnut woodwork
- Rovere Alévé type laminated floorboards
- Fabric interior upholstery
- Mattress in cabins, HR35kg/m3 foam

Standard version: 2 Cabins - 1 Head - 1 Workshop



COMPANIONWAY

Headroom: 1,95m / 6'5"

- Wooden saloon companionway with hanging steps made from laminated moulded wood with non-slip coating
- 2 Stainless steel handrails covered with anthracite leather

SALOON - PORT

Headroom: 2,00m / 6'7"

- U shaped saloon bench - double density foam
- Saloon table, wooden top, 2 fixed aluminum legs
- Storage under bench seats
- 1 dual USB port (in trim level)
- 1 Hull porthole
- 2 Coaming windows with pleated blinds
- 2 Opening deck hatches with mosquito screen/blinds

CHART TABLE - PORT

Headroom: 1,97m / 6'6"

- Table with drop fronts - Wooden fiddle
- Switch panel on bulkhead for access to electrical functions
- Stowage against the bulkhead below the chart table
- 1 230V socket (in trim level)
- 1 Single USB socket
- 1 spotlight
- 1 Opening porthole in coaming
- 1 Fixed coaming window with pleated blind

GALLEY - STARBOARD

Headroom: 1,91m / 6'3"

- C-shaped galley
- Work top in Compact Clay
- Stainless steel sink 2 rectangular basins - 1 Mixer tap with hot/cold water under pressure
- 1 Gas cooker 2 burners - Stainless steel oven on gimbal - Stainless steel protection handrail
- 190L / 50 US Gal icebox, top opening (with 10 L/3 US Gal freezer)
- Fitted lockers and closed shelving
- Open shelving above stove and sink
- Low-level stowage below sink
- Lower unit: 1 door, 2 drawers
- Bin with access on the work top
- 2 230V Sockets (in trim level)
- 2 Coaming windows with pleated blinds
- 1 Hull porthole
- 1 Flush deck hatch with blind/mosquito net

OWNER'S CABIN (Forward cabin)

Headroom: 1,94m / 6'4"

- 1 Central double bed (2,03 x 1,60 - 1,31m / 6'8" x 5'3" - 4'4")
- 2 Hanger closets, open storage compartment along the hull
- 1 bedside table on each side of the bed
- 2 Spotlights on the headboard
- 1 dual USB port (in trim level)
- 1 230V socket (in trim level)
- 3 Flush deck panel with blind/mosquito net
- 2 Portholes with rigid sliding blind

STARBOARD AFT CABIN

Headroom: 1,93m / 6'4"

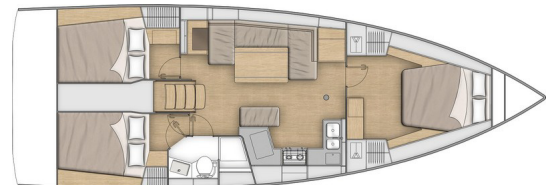
- 1 Double bed (2,04 x 1,37 x 1,21m / 6'8" x 4'6" x 4')
- 1 Hanging locker
- 1 Bed access sideboard
- 1 Spotlight on the headboard
- 1 dual USB port (in trim level)
- 1 230V socket (in trim level)
- 1 Hull porthole with curtain
- 1 Opening porthole below cockpit seat with curtain

STARBOARD AFT HEAD COMPARTMENT

Headroom: 1,95m / 6'5"

- Access from the saloon or the starboard aft cabin
- Shower with perspex door - self-draining storage tray - 1 mixer tap - White polyester shower base
- 1 Manual toilet
- 1 80 L / 21 US Gal rigid holding tank
- 1 Polyester basin - 1 Hot/cold water mixer tap
- 1 Cabinet + Storage space under the basin
- 2 Mirrors
- Toilet accessories
- 1 Opening porthole in coaming

3 cabins 1 head version (Option)



In the saloon: movable central seating facing the table, no seat back. Built-in stowage locker.

The workshop of the standard version converts into the aft starboard cabin with large hanging locker.

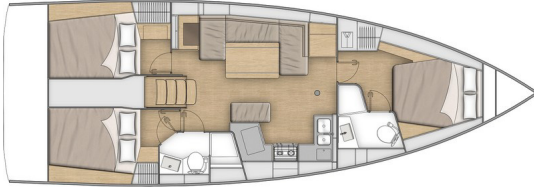
Port aft cabin

Headroom: 1,93m / 6'4"

- 1 Double bed (2,04 x 1,37 x 1,21m / 6'8" x 4'6" x 4')
- 1 Hanging locker
- 1 Bed access sideboard
- 1 Spotlight on the headboard
- 1 dual USB port (in trim level)
- 1 230V socket (in trim level)
- 1 Hull porthole with curtain
- 1 Opening porthole below cockpit seat with curtain



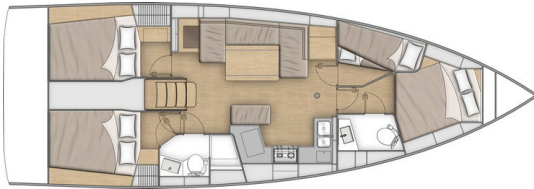
3 cabins 2 heads version (Option)



The forward cabin has a large head to starboard comprising:

- Private entrance through forward cabin
- Shower with perspex door - self-draining storage tray - 1 mixer tap
- 1 Manual toilet
- 1 50 L / 131 US Gal rigid holding tank
- 1 Polyester basin - 1 Hot/cold water mixer tap
- 1 Cabinet + Storage space under the basin
- 1 Mirror
- Toilet accessories
- 1 Deck hatch with blind/mosquito net

4 cabins 2 heads version



Port side cabin

Headroom: 1,94m / 6'4"

- 2 Bunk beds:
 - Top bunk (1,95 x 0,80 x 0,50m / 6'5" x 2'7" x 1'8")
 - Bottom bunk (1,91 x 0,59 x 0,40m / 6'3" x 1'11" x 1'4")

ENGINE

- Yanmar engine (Diesel): 45 CV/HP Common rail (4JH45) - Propeller shaft
- Engine control at the starboard helm station - Enginer control panel, to port
- Engine compartment: Soundproofing foam - Ventilation: 3 air intakes and 1 forced air outlets
- 1 Alternator 12 V / 125 Ah
- 1 Rotomoulded diesel tank 195 L / 52 US Gal (under port aft berth)
 - Electronic gauge - Low level alarm - 1 Deck filler
- Filters: Seawater - Diesel - Water separator
- Fixed three blades propeller
- 1 Engine access through companionway (opening with 2 gas struts)
 - 2 Engine access through aft cabins

ELECTRICITY

- 12V circuit
- 2 service batteries (115 Ah) - 1 Engine battery (120 Ah)
- 1 Power distributor
- 12 V electrical panel on the chart table with single USB socket (Fuses - Voltmeter - Water gauge - Fuel gauge - Battery warning - Fuel warning - Water warning)
- 1 Single USB socket
- Lighting: Overhead lights - Spotlights - LED strip
- Navigation lights (LED): 2 Navigation lights - 1 Anchor light on masthead - 1 Aft starboard stern light
- Wire runs for option cables

PLUMBING

- 1 rotomoulded freshwater tank (195L / 52 US Gal) under starboard aft berth - 1 Deck filler
- Pressurised electric water pump - Expansion tank - Inline filter
- 40 L / 11 US Gal Electric water heater (engine use)
- 1 Rigid black water holding tank for each WC
- Electrical shower drain pumps
- 1 Electric bilge pump
- 1 Manual bilge pump

GAS

- 1 2 container for gas bottles in the cockpit locker (0,39m x 0,39m / 1'3" x 1'3" - Height: 0,51m / 1'8")
- Regulator and safety tap

MISCELLANEOUS ITEMS

- Smoke detector



TRIM LEVEL & PACKS

TRIM LEVEL

	CONFORT	FAMILY
<ul style="list-style-type: none"> • Beige padding upholstery in cabins • Plain solid wood decked helmsman seating • 2 Halyard bags • Electric windlass (1 000 W) - Remote control • Hot/cold water cockpit shower • LED courtesy light in cockpit • Saloon: LED indirect lighting • Galley: Stainless steel cooker 2 burner oven/grill on gimbal • Galley: Front opening for icebox • Galley: Compact sink cover Clay with cutting board • Hifi Fusion + Interior loudspeakers & Waterproof exterior speakers • 1 dual USB port in the saloon and in each cabin • Full 115 V system (6 Inside sockets, 1 Shore power socket) • 60 Amperes battery charger • 2 Additional service batteries • AGM 100 Ah batteries with replacement of standard (engine and servo) • Battery charge display, Navicolor screen (3.5") • Mosquito nets for opening portholes 	<ul style="list-style-type: none"> ■■■■■■■■■■■■■■■■■■■ 	<ul style="list-style-type: none"> ■■■■■■■■■■■■■■■■■■■
<ul style="list-style-type: none"> • Aft transom protection • Bow protection • Outboard engine bracket • Saloon: Double berth • Galley: Sea water/fresh water foot pump • Additional freshwater tank (330L / 87 US Gal) • Ventilators in the saloon and the cabins 		<ul style="list-style-type: none"> ■■■■■■■■

ELECTRONICS PACKS: B&G

	COASTAL	OFFSHORE
<ul style="list-style-type: none"> • to port: 1 Triton 2 Graphic display • Starboard helmstation: 1 Multifunction touchscreen Zeus 7" wide wireless (GPS, Chart plotter, Card reader - Navionics Silver cartography included) • Sensor (Log, Speedometer, Temperature) • Wind Sensor (Windvane, Anemometer) • Windex Windvane • NAC3 autopilot + Control • Fixed V60 VHF, AIS receiver function 	<ul style="list-style-type: none"> ■■■■■■■ 	<ul style="list-style-type: none"> ■■■■■■■
<ul style="list-style-type: none"> • Port side helm station: 1 Multifunction touchscreen Zeus 7" wide wireless (GPS, Chart plotter, Card reader - Navionics Silver cartography included) • WR10 Wireless autopilot remote control • PC interface 		<ul style="list-style-type: none"> ■■■



CLASSICAL MAST PACK

- Classical $\frac{9}{10}$ anodised aluminum mast, 2 Spreaders
- Mainsail semi full batten
- Lazy Jack and Lazy Bag in Natural colour

RIGGING PACKS (Incompatible with First Line Pack)

	DOWNWIND PACK	UPWIND PACK	DOWNWIND + UPWIND PACK
• Rigging run back to cockpit (except boom topping lift)	▪	▪	▪
• 2 Genoa winches (H46.2 STA)	▪	▪	▪
• Additional jammers (on the roof for the halyard or on the coaming for the Genoa sheet, depending on the pack)	1 single on roof	2 doubles on coaming	2 doubles on coaming + 1 single on roof
• Polyester bowsprit with integrated anchoring gear and bobstay (for Code 0 and asymmetric spinnaker)	▪		▪
• Asymmetrical spinnaker rigging / Code 0	▪		▪
• Genoa sheet tracks on side decks (pulls back the traveller on the self-trimming jib rail)		▪	▪
• Furling Dacron genoa (to replace the standard self-tacking jib)		▪	▪

PERFORMANCE PACK

Optional sails (Lite Skin)

FIRST LINE ALU PACK (incompatible with the rigging packs)

- Polyester bowsprit with integrated anchoring gear and bobstay (for Code 0 and asymmetric spinnaker)
- Performance Classical aluminum mast, tapered, (Z Diffusion), 2 Aft swept spreaders (+ 0,45m / 1'6")
- Cascading backstay
- Cathedral type Dyform standing rigging
- Flatdeck genoa furler
- Additional jammers: 1 triple jammer on coaming to port and starboard for mainsail sheet, genoa sheet, adjustment of genoa sheet traveller (hauling line) + 1 single jammer on roof for spinnaker halyard/code 0
- Performance running rigging, Dyneema (Mainsail, Genoa, Code 0, Asymmetric spinnaker, Halyards)
- German system (Two-way mainsheet at the helm station)
- Harken pulleys upgrade (in lieu of standard) - 12 E60 blocks + 4 E80 blocks
- Genoa sheet tracks on side decks + Genoa sheets
- 2 Genoa sheet manual winches (H46.2 STA)
- Black composite steering wheels
- Performance hull decoration



OPTIONS

NAVIGATION ELECTRONICS B&G

- 4G Radar
- Chart table: Multifunction touchscreen B&G Zeus³ 12" wide wireless (GPS, Chart plotter, Chart reader - Navionics Silver cartography included)
+ Storage cupboard
- VHF H60 cockpit handset
- AIS 500
- Forward Scan Sensor (Forward underwater vision)

RIGGING - SAILS

- Performance mainsail & Genoa sheet/sail technology: Lite skin, Natural colour UV protection band, Lazy Jack and Lazy Bag in Natural colour, Full batten mainsail
- Code 0 on furler for mast with in-mast furling or standard mast (Incompatible with First Line Pack)
- Cascading backstay (for traditional mast, standard air draught)
- Releasable forestay chainplate

WINCHES

- 1 Port electric primary winch (H40.2 STAEH) in lieu of standard
- 2 Electric genoa winches (H46.2 STAEH) + 1 Winch handle (implies rigging pack)

HULL - DECK - COCKPIT

- Grey "Perle" hull
- Slatted teak cockpit floor
- Slatted teak catwalks
- Luxe polyester/wood cockpit table + Protective cases (Cadet Grey), Stainless steel handrail, Lighting, Central storage (15L / 4 US Gal)
- Luxe polyester cockpit table with central storage, handrails, lighting (supplied without cover)
- Refrigeration unit for Luxe cockpit table
- Cover for standard cockpit table (Cadet Grey)
- Steering wheels covers (Cadet Grey)
- Luxe (Cadet Grey) sprayhood with LED lighting, Superclear windows
- Luxe (Cadet Grey) bimini (Luxe sprayhood option required)
- Complete Cadet Grey cockpit closing (Bimini option required)
- Cockpit seats Dolce 51
- Electrically opening bathing platform, Control at steering station + 2 Remote controls
- Retractable bow thruster (Side Power) + Dedicated batteries (50 Ah - 12V)
- Mooring cleats on transom
- 3 folding blades propeller
- Black composite steering wheels
- Complete mooring kit
- Windlass control in cockpit with chain counter
- Access openings to port and starboard
- Outboard engine bracket (not compatible with Family trim level)
- Shore fresh water supply
- 1 Opening porthole with curtain in the aft cabins (on roof on each side of the companionway)



INTERIOR EQUIPMENT

LAYOUT VERSIONS

- 2 cabins 1 head version
- 3 cabins 1 head version
- 3 cabins 2 heads version
- 4 cabins 2 heads version

AMBIANCE

- Interior woodwork: Alpi white oak
- Brown oak laminated floors (only with Alpi white oak woodwork)
- Interior upholstery according to colour chart
- Macadamia padding upholstery in the saloon and the cabins (requires Confort trim level)
- Beige or Macadamia padding upholstery in cabins & Headboard of forward cabin (for Family finishing)

MULTIMEDIA

- TV pre-assembly in the saloon

DOMESTIC APPLIANCES

- 20 L microwave oven

ON BOARD COMFORT EQUIPMENT

- Double berth in saloon
- Sink unit in the forward cabin and mirror on bulkhead (for versions with 1 head, 2 and 3 cabins)
- Central bench seat in the saloon (for the 2 cabin version, 1 head)
- Pleated blinds for hull portholes in the saloon
- Sea water/fresh water foot pump in galley
- Extra water tank (330L / 87 US Gal) under berth in forward cabin
- 6,4 KVA 230 V / 50 Hz Generator
- Air conditioning 24 000 BTU
- Forced air heating fuel
- 12V / 230V inverter - 2 000 W
- Quiet Flush electric WC, fresh water or seawater
- Shore fresh water supply
- 2 90Ah lithium batteries to replace the 4 AGM service batteries (requires trim level)