

INTERIOR LAYOUT

Galley:

- Located at the center of the main deck, on the same level as the cockpit
- Choice of the equipment: electric oven (standard), ceramic cooktop (3 burners), dishwasher (option), 2x 75L refrigerators (standard), additional fridge on drawer (option), icemaker (option), stove hood (standard)

Cockpit:

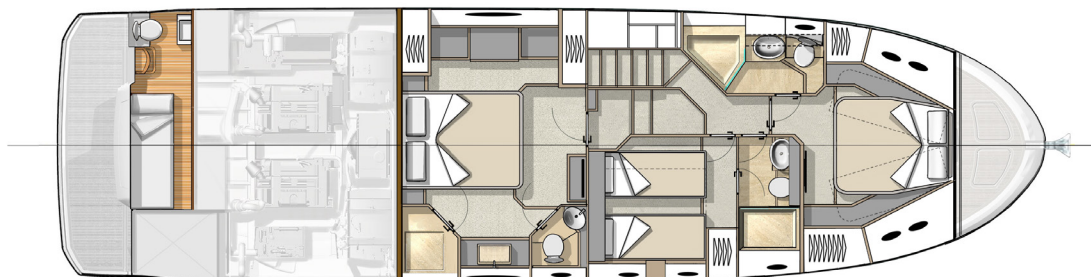
- Aft door: Full opening on the cockpit
- Hydraulic platform: 350 kgs (771 lbs) max load

Saloon:

- Large and deep sofa, seating for 6 people
- Counterfacing sofa for 2 persons
- Electric saloon table in standard
- 2 electric opening windows (port & starboard)

Helm station:

- 2x Simrad NSS 16'' (standard) or 1 SIMRAD NSS 24'' (option)
- Good visibility thanks to single part windscreen
- Central steering station : Besenzoni pilot seat with engine controls integrated (option)



Unrivalled Master and VIP suites

Heads

- Separate shower stall
- 3 private ensuites
- High headrooms

Bow VIP

- 4 opening portholes & 1 skylight
- Private ensuite
- 1 double bed or 2 beds

Full beam master room

- Exceptional volume and comfort (high headroom)
- 2 full screen windows
- private ensuite