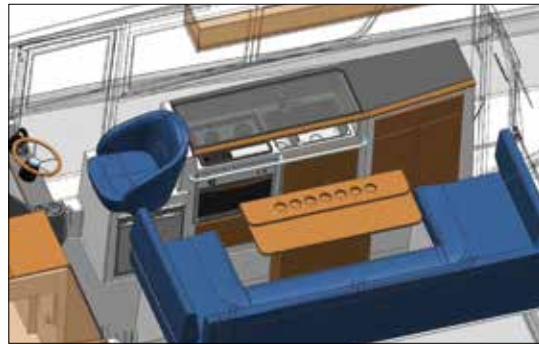
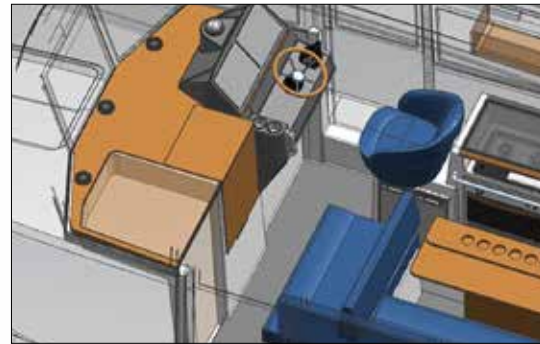
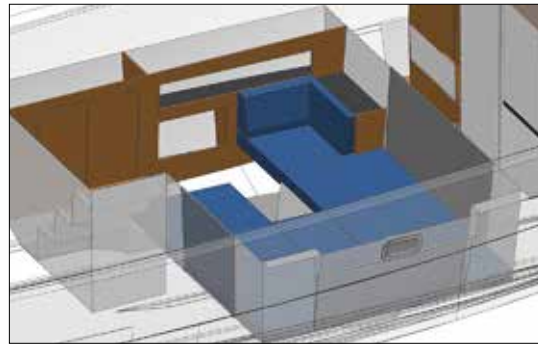
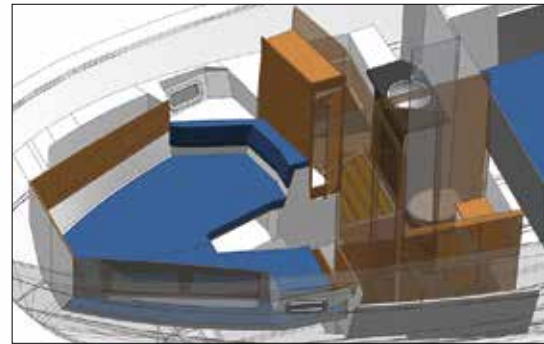




**THE NEW**

**SARGO 33**  
THE ALLSEASON BOAT

**SARGO 33**  
THE ALLSEASON BOAT



**SARGO 33**  
EXPLORER





# SARGO 33

THE ALLSEASON BOAT

## DIMENSIONS preliminary

Length overall (LOA)	11,03 m/36,2 ft
Hull length	9,88 m/32,5 ft
Beam	3,45 m/11,4 ft
Draft	1,1 m/3,7 ft
Dry weight *	6700 kg/14771 lb
Dry weight **	7200 kg/15873 lb
Height above WL to radar arch	3,10 m/10,2 ft
Berths	2 + 3

## CAPACITIES

Diesel tank *	600 l/158 gal
Diesel tank **	800 l/211 gal
Water tank	260 l/68,5 gal
Septic tank	100 l/26,3 gal
Engine battery	1 x AGM 90 Ah
Service batteries	2 x AMG 90 Ah
Bowthruster battery	1 x AMG 90 Ah

## PERFORMANCE

Engine recommendation *	1x400 hp
Engine recommendation **	2x300-2x400 hp
Top speed range	28-43 knots
Fuel consumption (25 kn) *	2,05 l/nm
Maximum cruising range/time *	298 nm/11,7 h
Maximum load	1800 kg
CE category	B-Offshore

\* Single engine \*\* Twin engine

*The information in this brochure is not binding.  
Special equipment which is not part of the standard boats is shown in the pictures.*



**Sarins Båtar Oy Ab**  
Isokarintie 4  
FI-67900 Kokkola, Finland  
www.sargoboats.fi

**SARGO**  
THE ALLSEASON BOAT

DEALER: