



GREENLINE 48

UPHOLSTERY 2014

CONTENT

INTERIOR GREENLINE 48

Upholstery Fabrics and Wood Sample **White oak interior**

Upholstery Fabrics and Wood Sample **Golden teak interior**

Upholstery Fabrics **Optional**

EXTERIOR GREENLINE 48

Exterior canvas Fabric

TECHNICAL DATA

INTERIOR GREENLINE 48

Upholstery Fabrics and Wood Sample

White oak interior

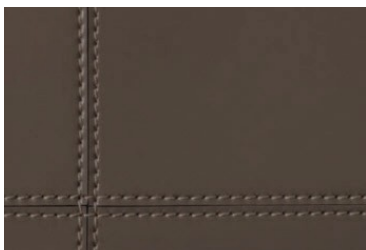




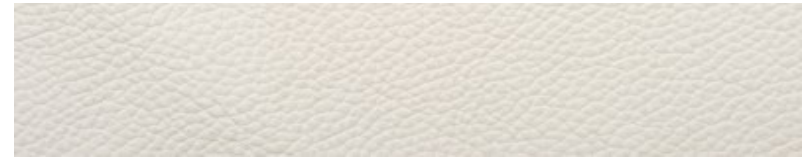
Furniture in White Oak



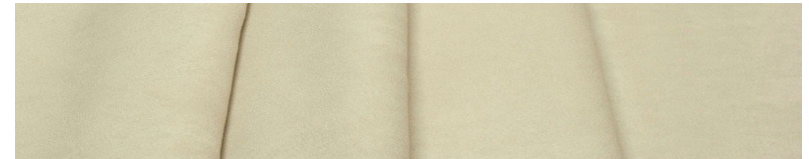
Floorboards in Walnut (salon)



Details in brown artificial leather Nevada 4652



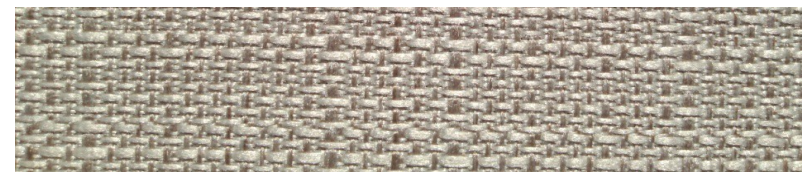
Ceiling: Idaho 01



Side walls: Life 01



Panels: Bolivia 04

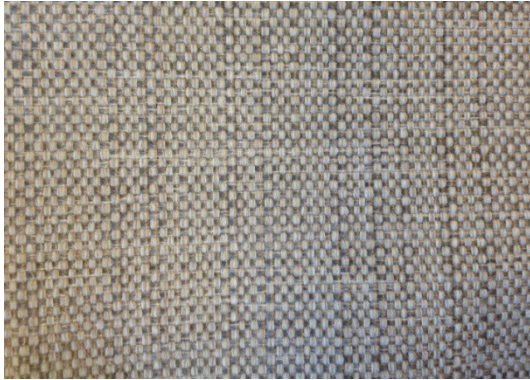


Carpet: Las Vegas 334



Curtains: Brasilia 10

Upholstery in salon STANDARD:

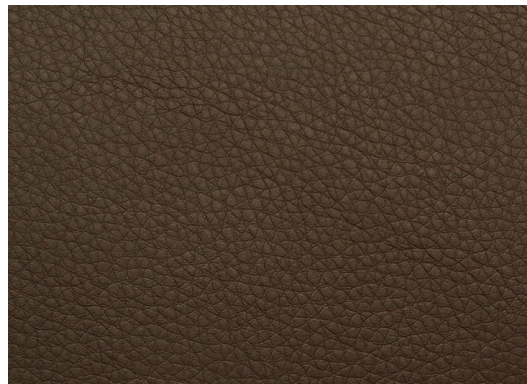


- RUGANA 24 Brown melange

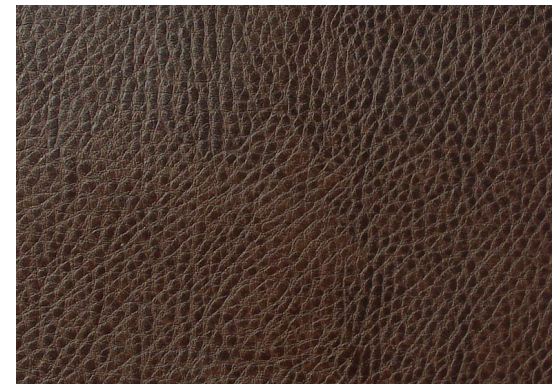
Upholstery in salon OPTIONAL:



- Microfiber SAND 84 Brown

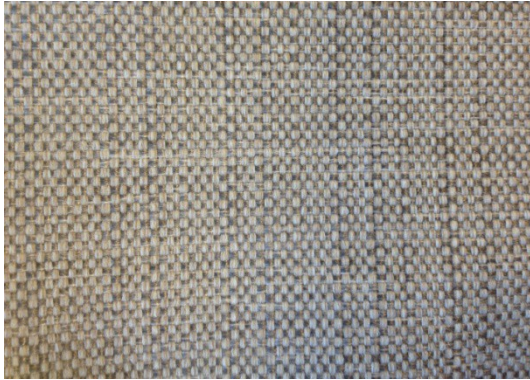


- Artificial leather MEXICO 64 Brown



- Leather EMOTION 298384 Brown

Upholstery in salon STANDARD:

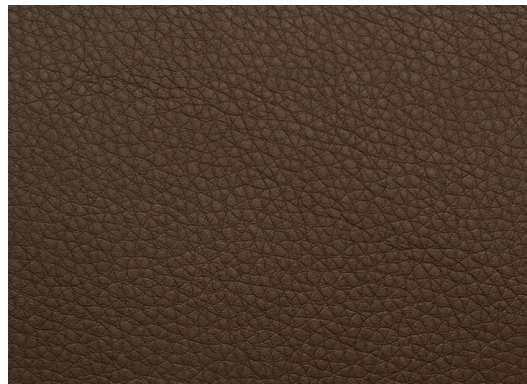


- RUGANA 24 Brown melange

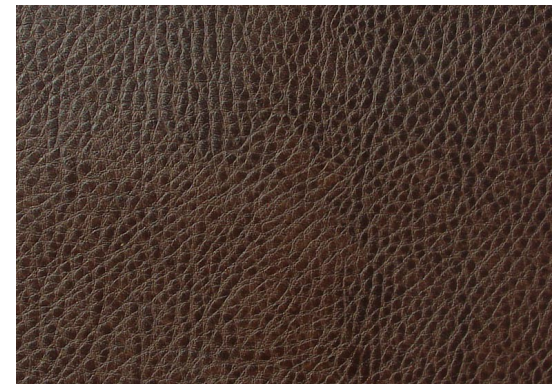
Upholstery in salon OPTIONAL:



- Microfiber SAND 84 Brown



- Artificial leather MEXICO 64 Brown



- Leather EMOTION 298384 Brown

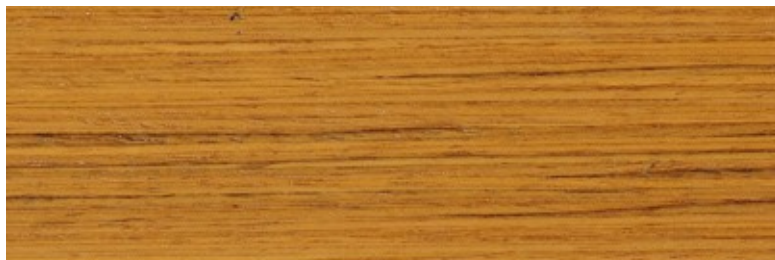
INTERIOR GREENLINE 48

Upholstery Fabrics and Wood Sample

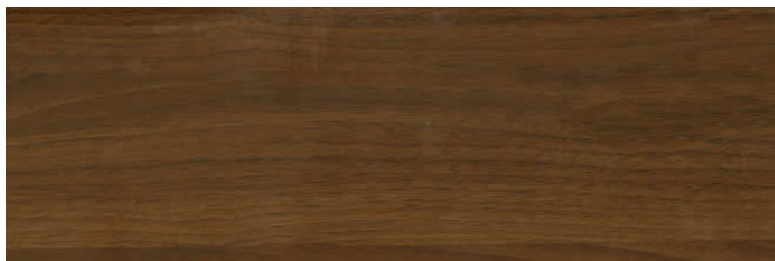
Golden teak interior



INTERIOR GREENLINE 48 Upholstery Fabrics and Wood Sample **standard**



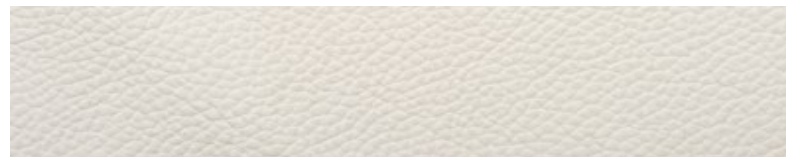
Furniture in Golden teak



Floorboards in Walnut (salon)



Details in cream artificial leather Nevada 905



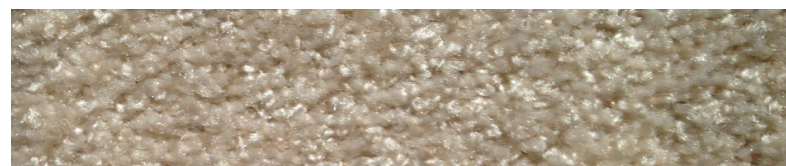
Ceiling: Idaho 01



Side walls: Life 01



Panels: Bolivia 04



Carpet: Las Vegas 307



Curtains: Brasilia 10

Upholstery in salon STANDARD:



- RUGANA 14 Cream melange

Upholstery in salon OPTIONAL:



- Microfiber SAND 04 Cream



- Artificial leather MEXICO 14 Cream



- Leather EMOTION 200004 Cream

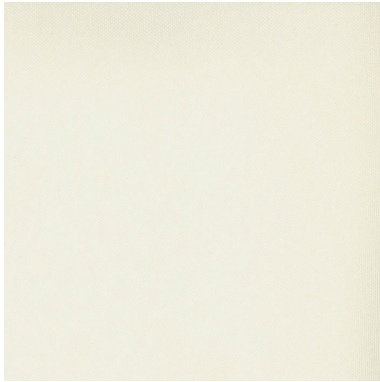
Curtains OPTIONAL:



- Venetian blinds in salon - light Walnut
(for white oak interior)

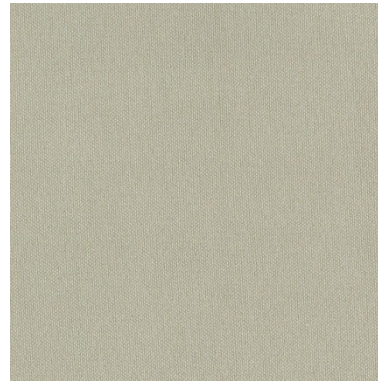


- Venetian blinds in salon – Light Bleached Oak
(for golden teak interior)



Dynamic 24 Cream - Artificial leather

- Cockpit cushions
- Front mattresses
- Flybridge cushions



Dynamic 06 Sliver - Artificial leather

- Cockpit cushions
- Front mattresses
- Flybridge cushions

TECNICAL DATA

UPHOLSTERY FABRIC

IDAHO artificial leather

Composition: 25% polyester/cotton; 75% PU

Color resistant (ISO 105 .B02) 5

Rubbing fastness (ISO 105-X12) 5

Tear resistance (ISO 13937-3) WARP 46,8N WEFT 48,8N

Cleaning: stains clean with neutral soap foam

NEVADA artificial leather

Composition: 16% polyester 75% PVC

Color resistant (UNI 7638/892) 8

Abrasion resistant > 40.000

Tear resistance (UNI 4818 PART 9A3) WARP 134N WEFT 164N

Cleaning: stains clean with neutral soap foam; if stains persist continue with 20% alcohol.

DYNAMIC artificial leather EXTERIOR

Composition: 99% PVC; 1% PU; back 100% Poliester;

Color resistant Light fastness >7; Waterproof > 200cm

Abrasion resistant > 100.000

Cold crack IUP 29 No crack by -23 ° C

Mildew resistant (A.A.T.C.C. Test Method A03/96 Scale 1-5) 5

Antibacterial and antimicrobial protection (ISO 22196-2011 A.A.T.C.C. Test Method 30-2004) 99%

Cleaning: stains clean with neutral soap foam; Never use detergents on solvent base or acetone for cleaning!

TECNICAL DATA

LIFE microfiber

Composition surface right side : 85% polyester 15% nylon

Composition surface back: 65% polyester 35% cotton

Color resistant (ISO 105 –B02) Dry/wet 5/4; Water 5; Light fastness 3-4

Tear strength 70,0 N

Abrasion resistant > 25.000

Cleaning: machine wash max. 30° C; do not machine dry; do not iron; do not bleach; Dry clean PCE only;

RUGANA fabric

Composition surface: 100% polyester

Composition surface: 55% polyester 45% polypropylene

Abrasion resistant 40.000

Fire retardant BS 5852 PART 1

Cleaning: do not machine wash; do not machine dry; do not iron; do not bleach; Dry clean PCE only;

BOLIVIA fabric

Composition surface: 100% polyester

Composition surface back: 70% polyester 30% cotton

Abrasion resistant 60.000

Fire retardant BS 5852 PART 1

Cleaning: machine wash max. 30° C; do not machine dry; do not iron; do not bleach; Dry clean PCE only;

LAS VEGAS carpet

Pile composition 100%PA Luxus 2-ply

Fire behaviour (EN 13501-1) Cfl-s1