



GENERAL SPECIFICATIONS

• L.O.A	14,60m	47'11"
• Hull length	13,65m	44'9"
• L.W.L.	13,24m	43'5"
• Beam	4,50m	14'9"
• Deep draft (Cast iron)	2,35m	7'9"
• Deep ballast weight	2 735kg	6,028 lbs
• Shallow draft (Cast iron)	1,75m	5'9"
• Shallow ballast weight	3 061kg	6,746 lbs
• Performance draft (Cast iron/Lead)	2,65m	8'8"
• Ballast weight performance	2 576kg	5,678 lbs
• Air draft	20,31m	66'8"
• Air draft (Mast Performance)	21,31m	69'11"
• Light displacement	10 597kg	23,356 lbs
• Fuel capacity (standard)	200L	53 US Gal
• Fuel capacity (Option)	200L	53 US Gal
• Fresh water capacity (standard)	370L	98 US Gal
• Fresh water capacity (Option)	200L	53 US Gal
• Engine power (standard)	57 HP	57 HP
• Engine power (Option)	80 HP	80 HP

ARCHITECTS / DESIGNERS

- Naval Architect: Pascal Conq
- Outside & interior design: Nauta Design

EC CERTIFICATION

- Category A - 10 people
- Category B - 11 people
- Category C - 12 people

STANDARD SAILS DIMENSIONS

• Furling mainsail (standard)	44,50m ²	479 sq/ft
• Self-tacking jib (standard)	40,42m ²	435 sq/ft
• Classic mainsail	54m ²	581 sq/ft
• Furling genoa (109 %)	52,16m ²	561sq/ft
• Code 0	102m ²	1,098 sq/ft
• Asymmetric spinnaker	152m ²	1,636 sq/ft
• I	17,72m	58'2"
• J	5,72m	18'9"
• P - Roller furling mast	16,57m	54'4"
• P - Classical mast	16,82m	55'2"
• E	5,630m	18'6"

PERFORMANCE (Extended classic mast)

• Classic mainsail	57,60m ²	620 sq/ft
• Genoa	57,80m ²	622 sq/ft
• I	18,33m	60'2"
• J	5,71m	18'9"
• P	17,82m	58'6"
• E	5,63m	18'6"

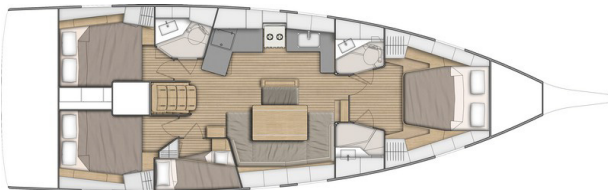
3 cabins 2 heads version:



3 cabins 3 heads version:



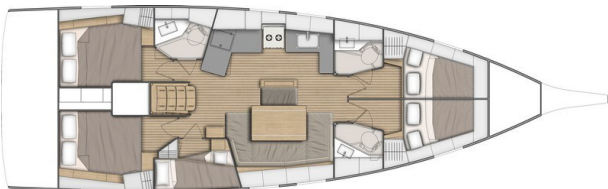
4 cabins 2 heads version:



4 cabins 4 heads version:



5 cabins 3 heads version:





STANDARD EQUIPMENT

CONSTRUCTION

- Design in accordance with European Directive requirements and according to CE certification
- Monolithic polyester contact hull
- Monolithic contact structural counter mould (Fabrics - resin) bonded to the hull
- Injected deck construction in glass fiber and Saerform foam sandwich, covered with non-slip diamond pattern
- Cast iron keel fixed with bolts and stainless steel backing plates
- Twin rudders hung with stainless steel stock
- White coloured hull - Grey metal hull graphics
- 8 Hull portholes

DECK EQUIPMENT

RIGGING

- Anodised aluminum mast, deck stepped with in-mast furling system, 2 Aft swept spreaders
- Anodised aluminum boom
- Cathedral type single-strand stainless steel standing rigging
- Split backstay
- Rigid boom vang with tackle
- Self-tacking jib with on-deck furler
- 2 Stand Up mainsheet blocks on the coachroof
- 1 Self-tacking jib track with traveller
- All lines brought back to the helm stations (except boom topping lift and genoa halyard)
- Complete running rigging: Mainsail halyard, Genoa halyard with cleat on mast, Boom topping lift with cleat on mast, Mainsheet, 1 Self-tacking jib sheet
- 6 Clutches
- Halyard covers
- 2 Flag halyards

WINCHES

- 1 Self tailing winch (H40.2 STA) at each helm station
- 1 Aluminum Speed Grip winch handle
- 2 Winch handle holders

SAILS

- Furling mainsail Dacron, with UV protection Natural, horizontal cut,
- Self-tacking jib Dacron with UV protection Natural, horizontal cut

MOORING LINES - MOORING

- Self-draining chain locker - Clench bolt - Hatch cover
- Single roller stainless steel bow fitting with offset roller
- 12 V - 1 000 W vertical electrical windlass - Remote control
- 6 Aluminum mooring cleats, Length: 400mm / 15³/₄" - Stainless steel chafing plate

SAIL LOCKER

- Access by polyester cover, Passage width: 65 x 50 cm / 2'2" x 1'8"
- Stainless steel ladder
- Shelving unit

SAFETY ON DECK

- 1 Open stainless steel pulpit
- 2 Stainless steel pushpits
- 2 Stainless steel handrails on coachroof
- 1 Lifebuoy support bracket
- Welded ring on pushpit for flag
- Double guard lines and stainless steel stanchions, 650mm / 2'2"
- Emergency ladder on pushpit

COCKPIT

- Self-draining cockpit
- 1 Watertight compartment under cockpit benches & 1 Wet locker
- 1 Locker in cockpit bottom
- 1 Gas compartment under port helmsman seat
- Natural solid wood slatted cockpit benches
- Solid wood slatted helm seats with starboard storage locker
- Foldaway helmsman foot chock
- 2 Steering wheel consoles: Stainless steel steering wheels (900mm diameter / 2'11") - Anthracite leather covering - Steering gear at the helm station - Steering line transmission system - Stainless steel handrail
- 2 Deck access for emergency tiller
- 1 Emergency tiller
- 1 Steering compass on the cockpit table
- Engine throttle and control panel on starboard
- Cockpit table, stainless steel support, 2 wooden flaps, lighting, 4 cupholders, stainless steel handrail, BIB storage
- 1 Cockpit shower with mixer tap
- 1 PMMA companionway door in 2 removable parts - Sliding hatch made of PMMA

SWIM PLATFORM / AFT TRANSOM

- Fully opening transom, convertible to bathing platform (2,65m x 0,80m / 8'8" x 2'7")
- Intermediate cockpit access step
- Manual control opening
- Natural solid wood decking on swim platform
- 1 Stainless steel, removable bathing ladder with dedicated stowage in the cockpit



INTERIOR

- Alpi walnut woodwork
- Rovere Aleve type laminated floorboards
- Interior cushions in cloth
- Padded lining in saloon (Beige)
- Mattresses in the cabins, HR35kg/m3 foam

Standard version: 3 cabins 2 heads version



COMPANIONWAY

Headroom: 1,98m / 6'6"

- Wooden saloon companionway with moulded wood suspended steps with non-slip surface
- 1 Stainless steel handrail with anthracite leather sheathing (to port)

SALOON - STARBOARD

Headroom: 2,01m / 6'7"

- U shaped saloon bench
- Saloon table - wooden top
- Central seat facing the table, without backrest
- Mirror on bulkhead, at base of companionway
- Storage under bench seats
- Stowage provided under the floor (Stowage for bottles + 2 2 plastic baskets)
- Piston-assisted hinges opening mechanism
- Bookshelf against forward bulkhead
- 1 Electrical panel for access to electrical connections (To starboard)
- 2 Hull portholes
- 2 Coaming glazing
- 2 Opening deck hatches with mosquito screen/blinds

CHART TABLE & SOFA - PORT

Headroom: 1,94m / 6'4"

- Table with storage- moulded wood fiddle - Laminated covering
- Meridian function seat facing the saloon
- 1 Flexible and swivelling reading light
- 2 USB sockets
- 1 Hull porthole

GALLEY - PORT

Headroom: 1,94m / 6'4"

- L-shaped galley
- Work top in Clay compact with Corian fiddles
- Stainless steel sink 2 rectangular basins - 1 Mixer tap with hot/cold water under pressure - Clay compact sink cover with cutting board function on back
- 1 Gas cooker 2 burners - Stainless steel oven on gimbal - Stainless steel protection handrail
- 1 85 litre ice box, top opening (without refrigeration unit)
- 1 130 litre refrigerator (12V), front opening
- Fitted lockers and closed shelving
- Bin under sink
- Low unit: 1 Drawer, 2 Doors against companionway bulkhead
- 1 Opening portlight with curtains in the coachroof side window
- 1 Hull porthole

OWNER'S CABIN

Headroom: 1,95m / 6'5"

- Central double bed (2,00m x 1,53m x 1,23m / 6'7" x 5' x 4')
- 2 Hanger closets, Open storage compartment along the hull, 6 Upper lockers, 1 Drawer under the bed
- 1 Storage locker either side of the bed
- 2 Night tables
- 2 Flexible and adjustable bedside lamps
- 2 USB sockets
- 2 Flush deck hatches with mosquito screen/blind
- 2 Hull portholes with sliding blind

2 PRIVATE HEADS:

Headroom: 1,93m / 6'4"

to port:

- Manual toilet
- 1 50 L / 13 US Gal rigid holding tank
- 1 Polyester basin - Mixer tap
- 1 Cabinet - Mirror
- Toilet accessories
- 1 Deck hatch with mosquito screen/blind

To starboard:

- Shower with wooden seat, white polyester shower base
- 2 storage closets
- 1 Deck hatch with mosquito screen/blind
- Basin with mixer tap

PORT AFT CABIN

Headroom: 1,92m / 6'4"

- 1 Double bed (2,05m x 1,40m / 6'9" x 4'7")
- 1 Hanging locker - 2 Cupboards - 1 Cubby hole locker
- 1 Bed access sideboard
- 2 flexible and multi-directional reading lights at bedhead
- 2 USB sockets
- 1 Hull porthole with sliding blind
- 1 Cockpit opening window with curtain under cockpit seats
- 1 Fixed cockpit window with curtain on the coaming

STARBOARD AFT CABIN

Headroom: 1,92m / 6'4"

- 1 Double bed (2,05m x 1,40m / 6'9" x 4'7")
- 2 Cupboards - 1 Cubby hole locker
- 1 Bed access sideboard
- 2 flexible and multi-directional reading lights at bedhead
- 2 USB sockets
- 1 Hull porthole with sliding blind
- 1 Cockpit opening window with curtain under cockpit seats
- 1 Fixed cockpit window with curtain on the coaming

AFT HEAD - STARBOARD

Headroom: 1,92m / 6'4"

- Access from the saloon or the starboard aft cabin
- Separate shower - Self-draining storage bin - 1 Mixer tap - White polyester shower base
- 1 Manual toilet
- 1 64 L / 17 US Gal rigid holding tank
- 1 Polyester basin - 1 Hot/cold water mixer tap
- 1 Cabinet + Storage space under the basin
- 2 Mirrors
- Toilet accessories
- 2 Opening ports on coaming with curtains on side windows



3 cabins 3 heads version



Large lengthways galley facing the saloon instead of the starboard sofa.

Central unit against central seat, backrest function.
The starboard aft cabin hanging locker is reduced.

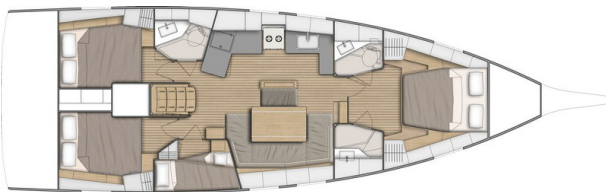
AFT HEAD - PORT

- Access from the saloon or the aft cabin
- 1 Manual toilet
- 1 64 L / 17 US Gal rigid holding tank
- 1 Polyester basin - 1 Hot/cold water mixer tap
- 2 Mirrors
- Toilet accessories
- 1 Opening portlight with curtains in the coachroof side window

LENGTHWAYS GALLEY COUNTER

- Work top in Clay compact with Corian fiddles
- Stainless steel sink 2 rectangular basins - 1 Mixer tap with hot/cold water under pressure - Clay compact sink cover with cutting board function on back
- 1 Gas cooker 2 burners - Stainless steel oven on gimbal - Stainless steel protection handrail
- 1 85 litre ice box, top opening (without refrigeration unit)
- 1 130 litre refrigerator (12V), front opening
- 3 Closed high shelves, 1 High open cubby hole locker
- Bin with access on the work top
- 1 Lower unit: 3 Storage drawer
- 1 Low unit: 1 Drawer 1 Door
- 1 Opening portlight with curtains in the coachroof side window
- 1 Hull porthole

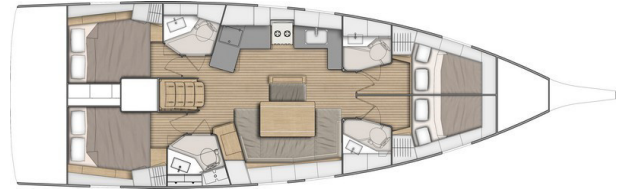
4 cabins 2 heads version



The starboard head of the standard version is replaced by a cabin with bunk beds:

- Headroom: 1,92m / 6'4"
- 2 Bunk beds: Top bunk (2,04m x 0,67m - 0,53m / 6'8" x 2'2" - 1'9")
- Bottom bunk (2,00m x 0,60m - 0,42m / 6'7" x 2' - 1'5")
- Storage
- 1 Opening porthole with curtain

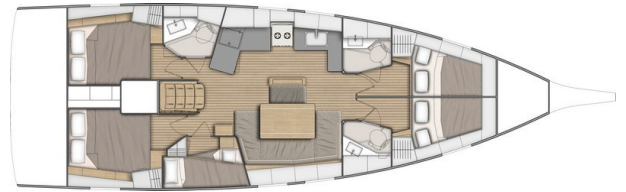
4 cabins 4 heads version



The saloon is unchanged. The cabins and heads are identical to version 3 cabins, 3 heads.

Forward: 2 cabins each with their private head.

5 cabins 3 heads version



The starboard head of the standard version is replaced by a cabin with bunk beds:

- Headroom: 1,92m / 6'4"
- 2 Bunk beds: Top bunk (2,04m x 0,67m - 0,53m / 6'8" x 2'2" - 1'9")
- Bottom bunk (2,00m x 0,60m - 0,42m / 6'7" x 2' - 1'5")
- Storage
- 1 Opening porthole with curtain

2 SYMMETRICAL FORWARD CABINS

Headroom: 1,95m / 6'5"

- 1 Double bed (2m x 1,40m x 0,80m / 6'7" x 4'7" x 2'7")
- 1 Hanging locker - 2 Closed high shelves, 2 Open cubbyholes, 1 Drawer under the bed
- 1 Swivelling reading light
- 1 Deck hatch with mosquito screen/blind
- 1 Hull porthole with sliding blind
- 2 USB sockets
- Access door to the head



ENGINE

- Engine Yanmar Diesel:
 - 57 HP/57 HP, Common Rail (standard)
 - 80 HP/80 HP, Common Rail (Option)
- Engine control at the starboard helm station - Control panel
- Engine compartment: Soundproofing foam - Ventilation: 3 air intakes and 1 forced air outlets
- 1 Alternator 12 V / 125 Ah
- 1 Rotomoulded diesel tank 200 L / 53 US Gal (under starboard aft berth) - Electronic gauge - Low level alarm - 1 Deck filler
- Filters: Seawater - Diesel - Water separator
- Fixed three blades propeller
- 1 Engine access through companionway (opening with 2 gas struts) - 2 Engine access through aft cabins

ELECTRICITY

- 12V circuit
- 2 service batteries (120 Ah) - 1 Engine battery (120 Ah)
- 1 Power distributor
- 12 V Electrical panel (Fuses - Voltmeter - Water gauge - Fuel gauge - Battery warning - Fuel warning - Water warning)
- 3 230V Sockets
- 9 USB sockets
- 1 Shore power socket (230V)
- Lighting: Overhead lights - Reading lights - Reading light, flexible and multi-directional
- LED navigation lights: 1 Masthead light - 1 Steaming light - 1 Anchor light on masthead
- Wire runs for option cables

PLUMBING

- 1 Rotomoulded freshwater tank 330 L / 87 US Gal, under berth in forward cabin - 1 Deck filler
- Pressurised electric water pump - Expansion tank - Inline filter
- 40 L / 11 US Gal Electric water heater (engine use)
- 1 Rigid black water holding tank for each WC
- Electrical shower drain pumps
- 1 Electric bilge pump
- 1 Manual bilge pump

GAS

- 1 Box for 2 gas bottles in the cockpit (Diameter: 0,28m/ 11" x Height: 0,44m/ 1'5")
- Regulator and safety tap
- Gas leak detector

MISCELLANEOUS ITEMS

- Smoke detector



TRIM LEVEL & PACKS

TRIM LEVEL

	CONFORT	FAMILY
<ul style="list-style-type: none"> Upholstery padding (Cabins): Beige Galley: Stainless steel cooker 2 burner oven/grill on gimbal 	<ul style="list-style-type: none"> ■ ■ 	
<ul style="list-style-type: none"> Cockpit bench extensions + 2 halyard bags below HiFi: Fusion + Interior loudspeakers & Waterproof exterior speakers Saloon & Galley: LED indirect lighting Galley: Refrigeration system, 12 V, in top-opening icebox (for storage below 0°C) Galley: Compact sink cover Clay with cutting board Battery charge display, Navicolor screen (3,5") 3 Additional 100 ampères service batteries 1 Additional 40 ampères battery charger AGM Batteries in lieu of standard Mosquito screens on portholes 	<ul style="list-style-type: none"> ■ ■ ■ ■ ■ ■ ■ ■ ■ ■ 	<ul style="list-style-type: none"> ■ ■ ■ ■ ■ ■ ■ ■ ■ ■
<ul style="list-style-type: none"> Bow stainless steel protection Aft transom protection Luxe polyester cockpit table with central stowage, handrails and LED lighting Double berth, in the saloon Galley: Sea water/fresh water foot pump Ventilators in the saloon and the cabins Outboard engine bracket 		<ul style="list-style-type: none"> ■ ■ ■ ■ ■ ■ ■

ELECTRONICS PACKS: B&G

	COASTAL	OFFSHORE	COASTAL + OFFSHORE PACK - LARGE CONSOLES (requires the bow thruster)
<ul style="list-style-type: none"> Starboard steering console: 1 Multifunction touchscreen Zeus³ 7" wide wireless (GPS, Chart plotter, Chart reader - Navionics Silver cartography included) Windex Windvane Wind Sensor (Windvane, Anemometer) Sensor (Log, Speedometer, Temperature) NAC3 autopilot + Starboard helm console control Fixed V60 VHF, AIS receiver function Protective cover (Cadet Grey): Steering wheel & console 	<ul style="list-style-type: none"> ■ ■ ■ ■ ■ ■ ■ 	<ul style="list-style-type: none"> ■ ■ ■ ■ ■ ■ ■ 	<ul style="list-style-type: none"> ■ ■ ■ ■ ■ ■ ■
<ul style="list-style-type: none"> Port steering console: 1 Multifunction touchscreen Zeus³ 7" wide wireless (GPS, Chart plotter, Chart reader - Navionics Silver cartography included) 1 Triton² display, on the port console WR10 Wireless autopilot remote control PC interface 		<ul style="list-style-type: none"> ■ ■ ■ ■ 	<ul style="list-style-type: none"> ■ ■ ■ ■
<ul style="list-style-type: none"> XXL consoles to port and starboard 1 Multifunction touchscreen Zeus^{3S} 9", on each console Electric engine controls, on the starboard console Windlass control with chain counter, on the starboard console Bow thruster control, on the starboard console 			<ul style="list-style-type: none"> ■ ■ ■ ■ ■

FASNET PACK

(requires the First Line pack and makes the Coastal pack obligatory)

- 3 Mast foot repeaters
- AIS 500
- H50 Wireless VHF set



PERFORMANCE PACK

Optional sails (Lite Skin):

Sail surfaces for information: Classic mainsail (58m² / 624 sq/ft), Genoa (62m² / 667 sq/ft)

FIRST LINE ALU PACK

- Polyester bowsprit with integrated anchoring gear and bobstay (for Code 0 and asymmetric spinnaker)
- Performance Classical aluminum mast, tapered, (Z Diffusion), 2 Aft swept spreaders (+ 1m / 3'3"). Track + Main sail ball traveller
- Textile hydraulic backstay
- Cathedral type Dyform standing rigging
- Flatdeck genoa furler
- 4 Additional halyard clutches (2 to starboard + 2 to port)
- Performance running rigging, Dyneema (Mainsail, Genoa, Code 0, Asymmetric spinnaker, Halyards)
- German system (Two-way mainsheet at the helm station)
- Harken pulleys upgrade: 12 Black Magic, 8 Element (in lieu of standard)
- Genoa sheet tracks on side decks + Complete genoa rigging (Genoa sheets, Return pulleys)
- Performa winches upgrade (1 Port electric H46.2 STPEH rigging winch (Halyards) + 1 Starboard manual H46.2 STP rigging winch + 2 Manual H50.2 STP genoa sheet winches)
- White composite steering wheels
- First Line hull decoration (red)

FIRST LINE CARBON PACK

- Polyester bowsprit with integrated anchoring gear and bobstay (for Code 0 and asymmetric spinnaker)
- Performance classical carbon mast, tapered (Axxon), 2 Black anodised aluminum aft swept spreaders (+ 1m / 3'3"). Track (Harken) + Main sail ball traveller
- Textile hydraulic backstay
- Black anodised aluminum boom
- Cathedral type Dyform standing rigging
- Flatdeck genoa furler
- 4 Additional halyard clutches (2 to starboard + 2 to port)
- Performance running rigging, Dyneema (Mainsail, Genoa, Code 0, Asymmetric spinnaker, Halyards)
- German system (Two-way mainsheet at the helm station)
- Harken pulleys upgrade: 12 Black Magic, 8 Element (in lieu of standard)
- Genoa sheet tracks on side decks + Complete genoa rigging (Genoa sheets, Return pulleys)
- Performa winches upgrade (1 Port electric H46.2 STPEH rigging winch (Halyards) + 1 Starboard manual H46.2 STP rigging winch + 2 Manual H50.2 STP genoa sheet winches)
- Black composite steering wheels
- First Line hull decoration (red)

RIGGING PACKS

	DOWNWIND PACK	UPWIND PACK	DOWNWIND + UPWIND PACK
• 2 Genoa winches (H50.2 STA)	■	■	■
• German system (Two-way mainsheet at the helm station)	■	■	■
• Polyester bowsprit with integrated anchoring gear and bobstay (for Code 0 and asymmetric spinnaker)	■		■
• Asymmetrical spinnaker rigging / Code 0	■		■
• 2 Additional halyard clutches	■		■
• Genoa sheet tracks on side decks (pulls back the traveller on the self-trimming jib rail)		■	■
• Furling Dacron genoa (to replace the standard self-tacking jib)		■	■

CLASSICAL MAST PACK

- Classical ⁹/₁₀ anodised aluminum mast, 2 Spreaders
- Dacron semi Full Batten mainsail
- 2 Additional halyard clutches (to port)
- Lazy Jack and Lazy Bag in Natural colour

TENDER PACK

- Retractable davits (Max. tender length: 3,10m / 10'2", Maximum load: 180kg / 397 lbs)
- Electric inflater / deflater
- Outboard engine bracket



OPTIONS

NAVIGATION ELECTRONICS: B&G

- 4G Radar
- Chart table: Zeus^{3S} 9" wide wireless Multifunction screen
- H50 wireless VHF set
- AIS 500
- Forward Scan Sensor (Forward underwater vision)
- 9" screen upgrade (with the Offshore pack)

RIGGING - SAILS

- Performance mainsail and genoa: Lite skin, Natural colour UV protection band, Lazy Jack and Lazy Bag in Natural colour, Full batten mainsail
- Mainsail DCX semi full-batten tri-radial cut for classic mast 2 spreaders
- DCX self-tacking furling jib, tri-radial cut, in lieu of standard (compatible with classic mast pack and incompatible with First Line)
- DCX furling genoa 105%, tri-radial cut, UV protective strip, Natural colour, replacing the Dacron self-tacking jib (compatible with standard in-mast roller reefing and air draught, Incompatible with First Line Pack)
- Code 0 with "Top Down" furling system (Incompatible with First Line Pack)
- Hydraulic backstay (for standard low air draft classical mast incompatible with mast with in-mast furling and First Line pack)
- 1 GRP mainsail arch with 2 Stand-Up mainsheet blocks
- Genoa Dacron (I: 16,92m / 55'6"; P: 15,75m / 51'8"; Furling mainsail: 41m² / 440 sq/ft, Genoa: 51m² / 548 sq/ft)
- Staysail rigging (Halyard sheave with block + Releasable forestay chainplate + 1 Self-tacking staysail sheet)

WINCHES

- 1 Port electric primary winch - H46.2 STAEH (in lieu of standard - Incompatible with First Line Pack)
- 1 Starboard electric primary winch - H46.2 STAEH (Incompatible with First Line Pack)
- 2 Electric genoa winches - H50.2 STAEH + 1 Winch handle (Incompatible with First Line Pack)
- 1 Harken Performa starboard manoeuvre electric winch - H46.2STP (implies pack First Line)
- 2 Electric Harken Performa genoa sheet winches - H50.2 STP (implies pack First Line)

HULL - DECK - COCKPIT

- Blue grey or pearl grey gel-coat (with matching sticker on the halyard covers)
- Solid wood decking on cockpit sole
- Slatted solid wood side decks
- Solid wood decking on sunbeds
- "Luxe" polyester/wood cockpit table + Protective cover (Cadet Grey), Stainless steel handrail, Lighting, Central storage (15L / 4 US Gal)
- Refrigeration unit for "Luxe" cockpit table
- Cover for standard cockpit table, Cadet Grey
- Gas cockpit plancha
- "Luxe" coachroof sprayhood, Windows in Extra-Clear, Cadet Grey (2 Versions: with and without mainsail arch)
- "Luxe" bimini, with shading canvas and LED lighting, Cadet Grey (2 Versions: with and without mainsail arch)
- Full cockpit enclosure Cadet Grey
- Sunshade (Roof), Cadet Grey
- Cockpit cushions Dolce 51 with seatbacks
- 2 Companionway sunbeds with tilting backrests and built-in cup holder, Dolce 51
- Tunnel bow thruster + 2 Dedicated batteries (50 Ah - 12V)
- Retractable bow thruster Quick + 2 Dedicated batteries (50 Ah - 12V)
- NOMEN folding aluminum cleats (in lieu of standard)
- Aft fairleads
- 3 folding blades propeller
- White or black composite steering wheels (Incompatible with First Line Pack)
- Complete mooring kit
- Windlass control in cockpit with chain counter
- Outboard engine bracket (Incompatible with Tender Pack)
- Tilting transom remote control
- Shore fresh water supply
- Fresh/sea water pump for deck cleaning
- 1 Additional opening porthole, in the aft cabins (in coaming)
- Electric engine controls + Bow thruster control, on the starboard console (only with the 7" screens)
- Access openings to port and starboard
- Large swimming ladder attached to the aft platform (in lieu of standard)



INTERIOR EQUIPMENT

LAYOUT VERSIONS

- 3 cabins 3 heads version
- 4 cabins 2 heads version
- 4 cabins 4 heads version
- 5 cabins 3 heads version

AMBIANCE

- Alpi white oak joinery (3 gloss)
- Brown oak laminated floors (only with Alpi white oak woodwork)
- Interior upholstery, according to swatches: Fabrics, Leather, Ultraleather
- Upholstery padding (Saloon and Cabins): Macadamia

MULTIMEDIA

- TV pre-assembly in the saloon, below the chart table (Large galley versions)
- TV pre-mounted on riser (folding) in the saloon (3 cabins 2 heads version)
- TV pre-assembly in master cabin
- BOSE speaker upgrade in the saloon

DOMESTIC APPLIANCES

- Dishwasher for 6 sets (Only in lengthways galley counter version)
- Microwave oven (20L)
- Stainless steel cooker 3 burner oven/grill on gimbal (required Confort or Family trim level)

ON BOARD COMFORT EQUIPMENT

- Berth in saloon
- Seat back for central bench seat (Large galley versions)
- Spring mattress in the cabins
- Wrinkled blinds in the saloon (Hull portholes)
- 3 Lithium batteries - 90 Ah (to replace the AGM batteries, required Confort or Family trim level)
- Additional water tanks (200L / 53 US Gal), under starboard aft berth
- Extra diesel tanks (200L / 53 US Gal), under starboard aft berth
- 7,5 KVA 230 V / 50 Hz Generator
- Watermaker (60 l/h / 16 US Gal/h)
- Air conditioning - 36 000 BTU (+ Shore socket extension cord - 15m / 49'3")
- Forced air heating fuel
- 12/230 V, 2 kVA inverter
- Quiet Flush electric toilets - Fresh water/Seawater
- Sea water/fresh water foot pump (Galley)